

Operator's Manual and Parts Book

1000 Accumulator

**Effective: 1 Dec 2008
Revision "D"**

Serial No.: 04954-Current



HOELSCHER

HOELSCHER, INC.
312 S Main Bushton, KS 67427
Phone: 620 -562-3575 Fax: 620-562-3359
www.hoelscherinc.com

**Note: This manual is concisely written and easy to understand.
Please have each operator read it before using the machine.**

Introduction

The purpose of this manual, is to explain the operation and maintenance of the Model 1000 Bale Accumulator. It also contains a parts listing for reference, if replacement parts are needed. Everyone who will be using the machine, should first acquaint themselves with the operational and safety procedures, as shown within.

Your dealer will review the operation, maintenance, adjustment procedures, and safety precautions with you at the time of delivery. He will also assist in filling out the Warranty Registration, which should be returned to us, within 10 days after you take receipt of the equipment.

Contents

General

Introduction.....	1
Contents.....	1
Warranty.....	2
Specifications.....	2
Product Identification.....	2

Safety

Safety Symbols.....	3
Safety Precautions.....	4
Location of Safety Signs and Decals.....	5

Set-up & Operation

Installation & Preoperation.....	6
Operation.....	7
Set-up Instructions.....	8
Caster Brake Ass'y & Adjustment.....	9
Attaching to a Conventional Baler.....	10
Attaching to a Center-line Baler.....	11
Bale Length Adjustment.....	12
Control Lever & Detent Adjustment.....	13
Side-Rail & Control Bar Adjustment.....	14
Hydraulic System Conversion.....	15
Safety Valve Adjustment.....	16
Use of Actuating Screw.....	17
Lubrication.....	18

Parts

Frame Assembly.....	19
Bed Assembly.....	20
Hydraulic System.....	21
Hydraulic Control Assemblies.....	22
Retractable Arm.....	23
Safety Signs & Decals.....	24

Options

Wagon Hitch.....	25
Bed Extension Kit.....	26
Hold-Down Kit.....	27
Side-Hill Kit.....	28
Hydraulic Power Pack.....	29
Dolly Wheel.....	30

Trouble-Shooting

Notes.....	31
Trouble-Shooting.....	32

MANUFACTURER'S WARRANTY

Each new machine produced by HOELSCHER, INC., is eligible to be covered by a manufacturer's warranty. If the machine has not been altered, abused, or neglected, and has been properly assembled, adjusted, serviced, and operated, it is guaranteed against defective material and workmanship, for a period of 12 months after the date of retail sale. It is the customer's responsibility to verify that the correct mounting brackets, hydraulic system, etc., are in use.

HOELSCHER, INC., at its option, shall repair or replace any defective part, which has been reported in writing to HOELSCHER, INC., within 60 days of the failure. The warranty registration number must be included.

Replacement parts will be shipped, freight prepaid, by regular ground delivery services. These shipments (including the cost of the part, plus freight) will be invoiced to the customer. If the defective part is returned to HOELSCHER, INC., freight prepaid, and the part is deemed defective, the amount of the invoice will be credited to the customer's account. When returning defective parts, freight must be prepaid. If next day delivery service is requested by the customer, any additional charges will be invoiced at the customer's expense.

This warranty does not apply to tires or other consumable items which are used on HOELSCHER, INC. products.

This warranty is in lieu of all other warranties, whether express, implied, or statutory. HOELSCHER equipment is not warranted for merchantability or fitness of purpose. HOELSCHER, INC. is not liable for consequential damages on account of any of its products.

Warranty requests will not be honored, unless HOELSCHER, INC. has your Warranty Registration on file.

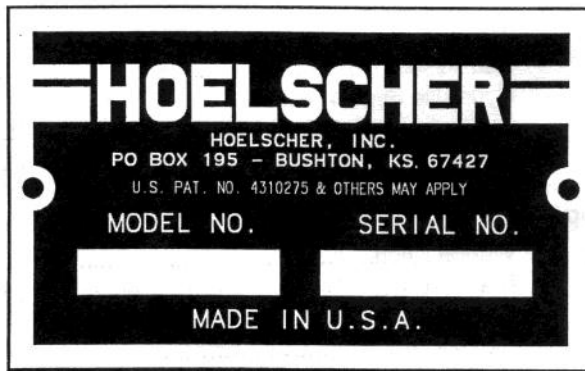
SPECIFICATIONS

Length.....	118in (3000mm)	Oil capacity (required to fill system).....	1.15 US gal (4.4 litre)
Width.....	124in (3150mm)	Hydraulic volume required from pump.....	12-18 GPM (45-68 l/m)
Height.....	51in (1295mm)	Hydraulic pressure required from pump.....	1200-2400 psi (82-165 Bar)
Weight.....	1620 lbs (736 kg)	Tires (dual wheels on two casters).....	(4) P175-13
	Bale capacity (14in x 18in bales).....		(10) 36-50in (965-1270mm) long
			(15) 32-33in (812-864mm) long
	Bale capacity (16in x 18in bales)	Same as 14in x 18in (Optional Bed Extension Kit required)	

*Required hydraulic volume and pressure depends on baling conditions.

IDENTIFICATION

The identification plate of your machine, is located on the front of the frame of the accumulator. Record this information in the space below and refer to it when making any correspondence concerning your particular unit.



Serial No.: _____ Warranty Registration No.: _____

Purchased from: _____ Date: _____

Address: _____ Phone No.: _____

Take note! This SAFETY ALERT SYMBOL found throughout this manual, and on safety signs, is used to call your attention to instructions involving your personal safety and the safety of others. Failure to follow these instructions can result in injury or death.



This symbol means:

-ATTENTION!

-BECOME ALERT!

-YOUR SAFETY IS INVOLVED!

SIGNAL WORDS: Note the use of the signal words DANGER, WARNING, and CAUTION with the safety messages. The appropriate signal word for each has been selected using the following guidelines.

DANGER

DANGER, indicates an imminently hazardous situation that, if not avoided, will result in death or serious injury. This signal word is to be limited to the most extreme situations typically for machine components which, for functional purposes, cannot be guarded.

WARNING

WARNING, indicates a potentially hazardous situation that, if not avoided, could result in death or serious injury, and includes hazards that are exposed when guards are removed. It may also be used to alert against unsafe practices.

CAUTION

CAUTION, indicates a potentially hazardous situation that, if not avoided, may result in minor or moderate injury. It may also be used to alert against unsafe practices.

If you have questions not answered in this manual, or require additional copies of this manual or safety signs, please contact your dealer or Hoelscher, Inc. 312 S. Main St., Bushton, KS 67427. Telephone 620-562-3575 www.hoelscherinc.com

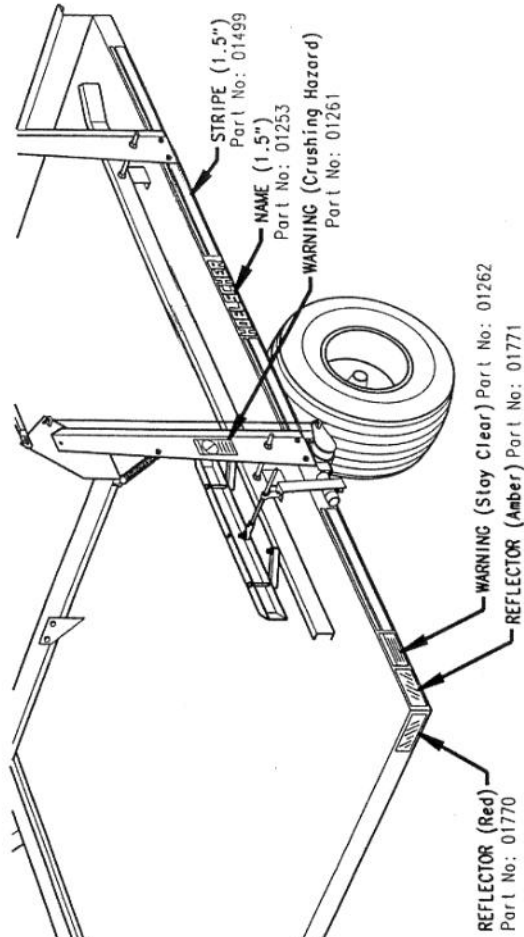


Safety Precautions

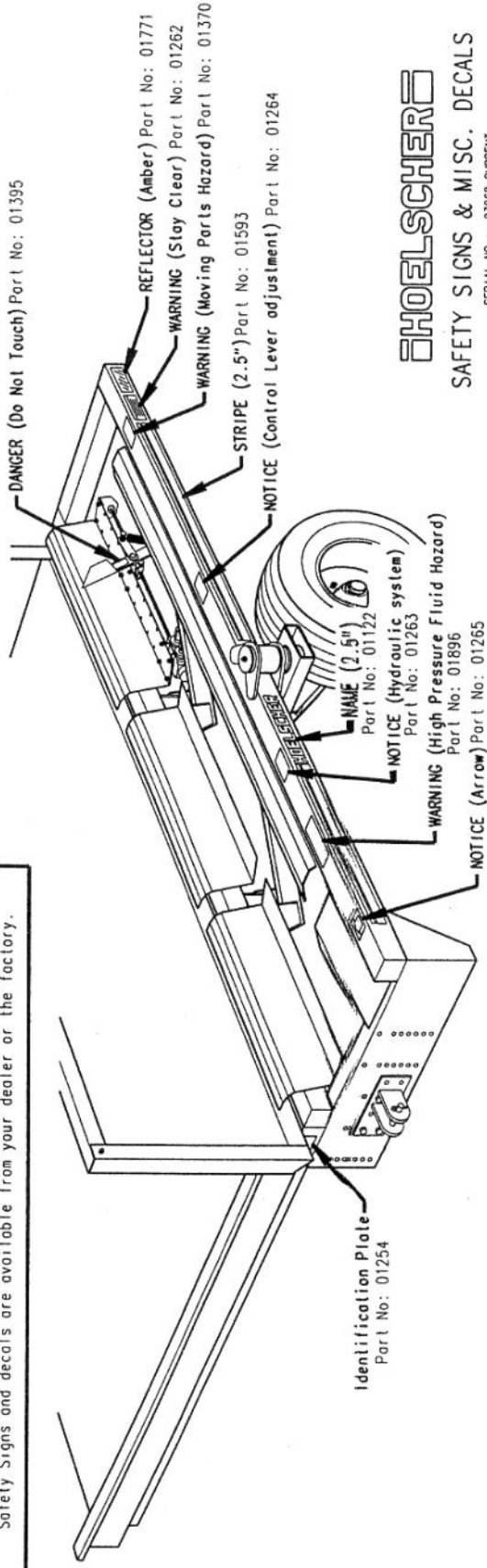


Almost without exception, accidents are caused by operator error. The operator is responsible for following these safety tips and to use good judgment in the operation of this machine.

- * Be sure that every operator reads and understands this manual before attempting to use the accumulator. As with any machine, it requires a careful and competent operator.
- * Familiarize yourself with the Safety Signs and instruction decals on the accumulator. They are for your information and protection.
- * Replace any damaged or missing Safety Signs on the unit.
- * Keep your body and clothing away from moving parts.
- * Do not start the machine until you are sure that everyone is clear.
- * Never grab the Arm Control Lever with your hand. The Push-over Arm will raise and hit you. Be sure that the hydraulic system is disengaged before adjusting the Arm Control Lever and Detent.
- * Never attempt any adjustment while the hydraulic system is energized. Disengage the hydraulic system and stop the tractor engine before working on the accumulator.
- * Do not clean, lubricate, or adjust equipment while the hydraulic system is energized.
- * Never allow anyone to ride on the accumulator. It operates automatically and its movements are rapid, without warning.
- * Never leave a running machine unattended.
- * Do not travel on the road with bales on the accumulator's bed. They could slide off or activate the bed control valve and dump the bed.
- * Always disengage the hydraulic system before road travel, to prevent any accidental activation of the accumulator.
- * Caster wheels may whip at high speeds and cause you to lose control and have an accident. Do not exceed 15 mph (24 kph).
- * Allow for extra length and width when making turns. The accumulator will swing wide when turning.
- * Never use independent braking when traveling on a road. Keep the brake pedals latched together.
- * Comply with state and local laws governing highway safety and movement of farm machinery on roads.
- * Relieve hydraulic pressure before disconnecting hoses, to prevent fluid from spraying you.
- * Never use your hands to locate a hydraulic leak. Fluid escaping under pressure can penetrate the skin. Hydraulic fluid can cause Gangrene. If injured by a high pressure leak, see a doctor at once. Openings in the skin are susceptible to infection from hydraulic fluid. Gangrene can result.
- * Do not permit children to play on or around stored machinery.



	DANGER	Indicates an imminently hazardous situation, that if not avoided, will result in death or serious injury.
	WARNING	Indicates a potentially hazardous situation, that if not avoided, could result in death or serious injury.
	CAUTION	Indicates a potentially hazardous situation, that if not avoided, may result in minor or moderate injury.
	NOTICE	Gives instruction for proper operation of the machine.
Safety Signs (DANGER, WARNING, and CAUTION) are for your protection.		
If Safety Signs have been damaged, removed, become illegible, or parts have been replaced without these signs, new signs must be applied.		
Safety Signs and decals are available from your dealer or the factory.		



HOELSCHER
 SAFETY SIGNS & MISC. DECALS
 SERIAL NO.: 0306B-CURRENT

Installation and Pre-operation

1. Assemble the accumulator, as shown on pages 8 and 9.
2. Mount the accumulator to the baler with a hitch as described on page 10 or 11, depending on the type of baler that you are using.
3. Route the hydraulic hoses to the tractor's remote quick couplers (or to the optional Hydraulic Power Pack). Secure the hoses to the baler, so as to avoid cutting, crushing, or scuffing. Do not attach near moving parts such as the needle carriage, pick-up, PTO, or where they might rub the ground.
4. Check all bolts and hydraulic fittings for tightness.
5. Grease all lubrication points. See page 18.
6. Adjust the accumulator for the the desired length of bale, as shown on page 12. If the Arm Control Lever must be relocated to allow for a different length of bale, the Detent must also be moved accordingly, see page 13. Since there is no oil in the hydraulic system at this time, The Push-over Arm may be raised by hand to verify adjustments. This is a good time to study the operation of the Detent in relation to the Arm Control Lever. This is the most critical adjustment on the machine. The Retractable Arm Extension may also need adjustment, depending on bale length. See page 23.
7. If you are using a 14"x18" baler, proceed to paragraph 8. If you are using a 16"x18" baler, the optional Bed Extension Kit should now be installed.
8. Refer to the tractor's operator's manual to find the type of hydraulic system the tractor is equipped with, "open-center" or "closed-center". Make the appropriate adjustments, as shown on page 15.


If the tractor uses a "load-sensing" hydraulic system, it is usually best to set the accumulator for "open-center". With these systems, it is important to adjust the tractor's hydraulic flow control for the minimum amount of oil required for proper operation of the Push-over Arm. Higher flow rates will cause excessive heat in the hydraulic system.

If your tractor has a "priority valve", this should be used to power the accumulator.
9. Connect the hydraulic hoses to their respective couplers on the tractor. The smaller hose is the "power" and the large hose is the "return". With everyone standing clear, energize the hydraulic system by holding the tractor's hydraulic control lever back. It will take a few seconds to purge air from the system. If the Push-over Arm or Bed of the accumulator moves, immediately move the tractor's hydraulic control lever to neutral. No part of the accumulator should move at this time. Verify that the hoses are connected to the tractor, so that no part of the accumulator moves when the hydraulic system is energized.

Notice: If the hoses are connected to the tractor incorrectly, or if the tractor's hydraulic control lever is moved the wrong direction, the Push-over Arm and Bed will raise and could cause damage.

Normally, it is best if the hoses are connected to the tractor, so that the hydraulic control lever is pulled "back" to energize the accumulator. If your hoses are connected so that the hydraulic control lever needs to be pushed forward, be careful that you don't inadvertently push it into "float" position. In "float", the hydraulic system does not provide flow.


The tractor's hydraulic control lever will need to be secured in the "back" position. If there is no provision for this, a tarp strap can be used.
10. With the hydraulic system connected and operating correctly, actuate the Arm Control Valve by turning the Actuating Screw. See page 17.

 **DANGER** Never touch the Arm Control Lever by hand, if the hydraulic system is energized. The Push-over Arm will raise quickly and could cause serious personal injury.

It may take a few seconds to purge air from the hydraulic hoses and cylinder, but the Push-over Arm will move extremely fast. When the arm reaches the top of its stroke, lower it by turning the Actuating Screw counter-clockwise. Repeat this step three or four times to purge all air from the system. The Push-over Arm should now operate smoothly and chatter-free.

Pre-operation, cont'd

10. Pull the Bed Control Bar and hold it until the air is purged from the hydraulic hoses and cylinder. The Bed should raise to approximately 45 degrees. See page 14 for details. When you release the Control Bar, the Bed should return down. If the bed does not go down, see Trouble-shooting for instructions. Repeat this step until all air has been purged from the system and the Bed operates smoothly.

 **WARNING** Make sure that no one is around or under the accumulator when attempting this step. The Bed could crush a person and cause serious injury.

11. Position yourself so that you can safely operate the Actuating Screw and see the Safety Valve. Raise the Push-over Arm, and watch the Safety Valve. See page 16 for location and details. The spool of this valve should extend "out" when the arm starts to raise up. Lower the Push-over Arm with the Actuating Screw, deactivate the hydraulic system, and stop the tractor's engine. Check adjustment of the Safety Valve.

12. Check for any leaks in the hydraulic system. Due to the volume of hydraulic oil used to fill the hoses, valves, and cylinders of the accumulator, it will be necessary to check and refill the tractor's hydraulic reservoir.

13. Check for proper tire inflation. Maximum pressure: 35psi (2.41 bar).

14. It is the responsibility of the customer to know the lighting and marking requirements of the local highway authorities, and to maintain the equipment to provide compliance with the regulations. Add extra lights when transporting at night or during periods of limited visibility.


15. With steps 1 through 13 completed, the accumulator should now be ready for final adjustments, which are best made in the field.

Operation

1. When in the field and everyone is clear of the machine, start the baler and energize the hydraulic system. Always watch the accumulator when energizing the hydraulic system, to verify that the hydraulic hoses are attached properly to the tractor. The hydraulic control lever of the tractor will need to be secured in the proper energized position. For tractors with adjustable hydraulic flow control, use only enough speed to make the Push-over Arm cycle without catching the next bale out of the baler as the arm returns down. Excessive flow will cause heat build up in the hydraulic system and the bales will be thrown, rather than placed into position.

2. Start baling and proceed until the first bale out of the baler almost reaches the Arm Control Lever. Stop baling and turn off the tractor.

3. Check to see if the bale length is correct and meets the conditions shown on page 12. If the Arm Control Lever is adjusted for the desired length of bale, adjust the bale length setting of the baler as necessary.

 **DANGER** Never attempt any adjustment while the hydraulic system is energized or if the tractor is running. Serious personal injury could result.

4. Start the tractor, and baler, and energize the hydraulic system. Resume baling until 10 bales are on the accumulator's bed. If the bed does not dump, stop baling and turn off the tractor, so that you can check the adjustment of the Bed Control Bar and Side-rail. See page 14 for details.

5. With the above adjustments verified, the accumulator should now be ready for use. The baler will produce bales of varying length depending on the crop conditions, and will require periodic adjustment to maintain a length compatible with the accumulator's setting. Also, when baling different crops, the Bed Side-Rail and Control Bar may need to be readjusted. See the "Trouble-shooting" section of this manual if you experience difficulties in operation.

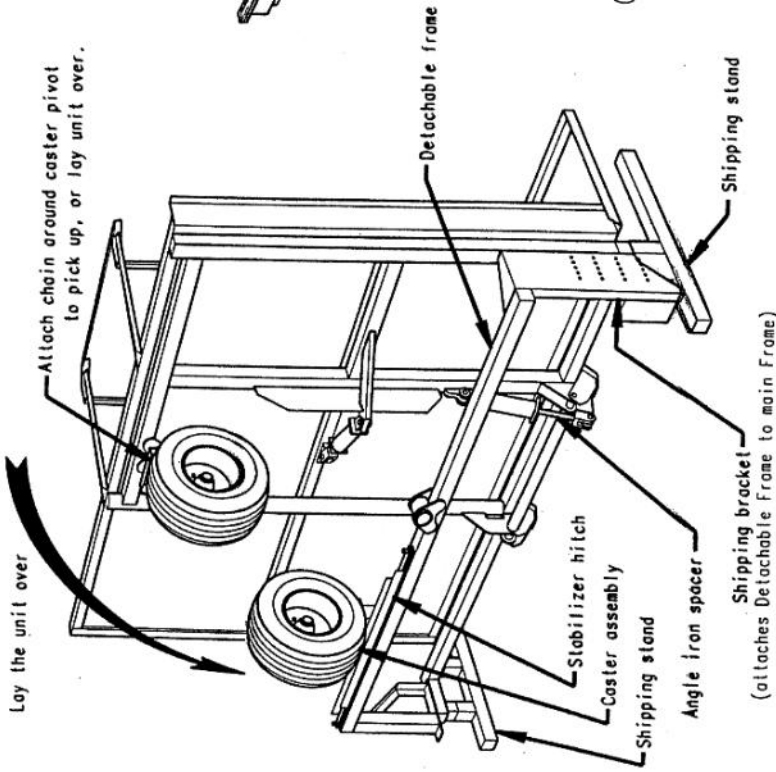


Figure 1

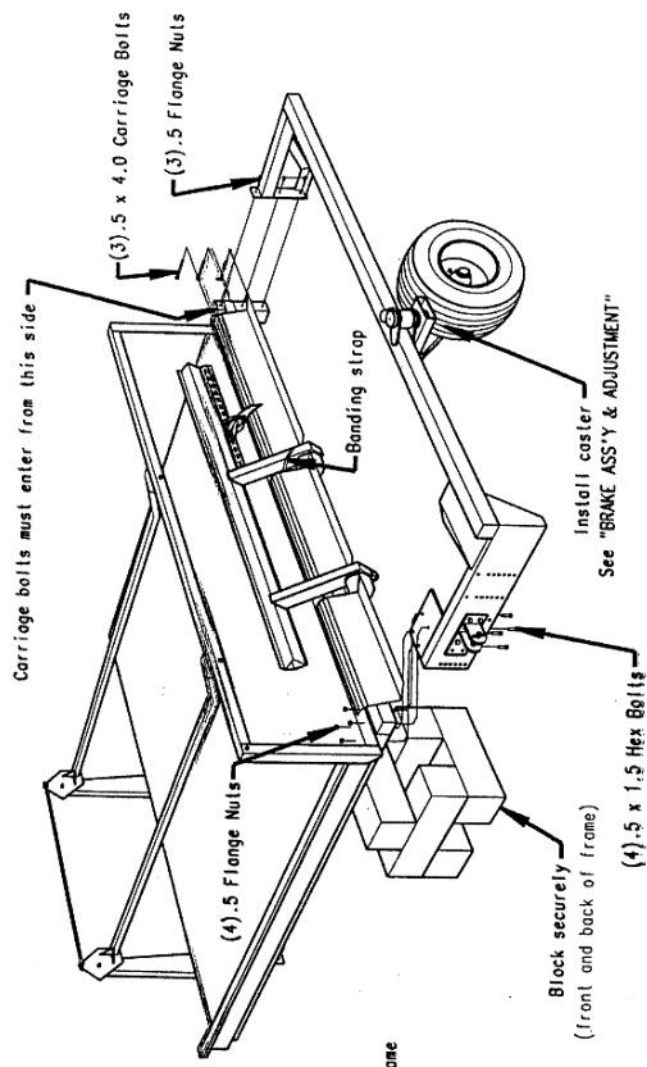
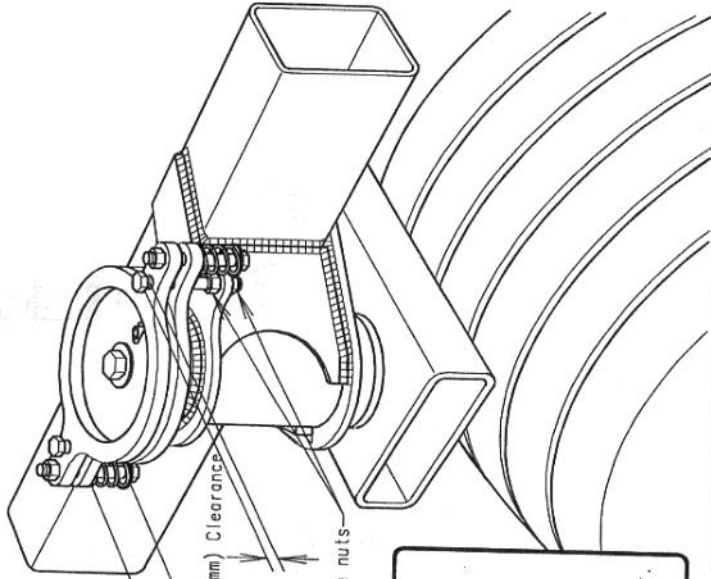
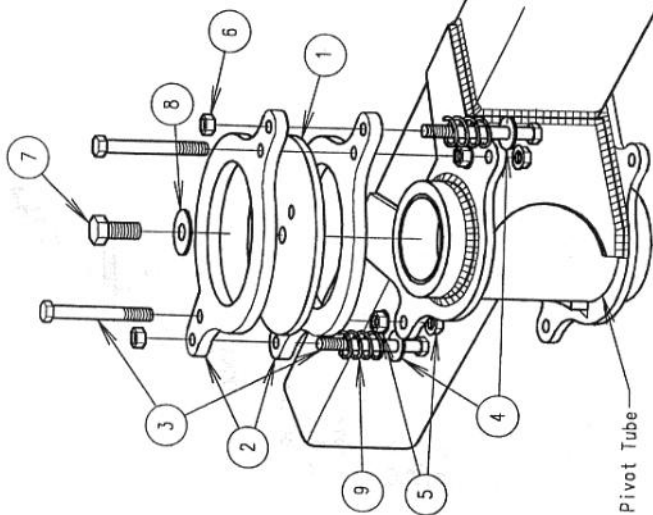


Figure 2

Instructions

1. Remove the Stabilizer Hitch and Caster assembly, which are banded to the accumulator Frame.
2. Attach a chain or heavy duty lifting strap around the top Caster, as shown in Figure 1 above. Using a front-end loader or fork lift, lay the accumulator over, so that it rests on the two shipping stands and the one Caster.
3. Using blocks to support the machine, as shown in Figure 2, remove the detachable frame and shipping stands, and shipping bracket.
4. Turn the Detachable Frame over and reattach it to the main Frame, as shown in Figure 2.
5. Clean, lubricate, and install the Caster.
6. Install the Caster Brake, as shown on the following page.
7. Remove the angle iron spacer, fig. 1, from the hydraulic cylinder, which operates the Push-over Arm, and cut the banding strap which is holding the Push-over Arm in place, fig. 2.
8. Mount the accumulator to the boiler, as explained in the "Installation and Pre-operation" section of this manual.



INSTRUCTIONS:

1. Insert Caster into the pivot tube.
2. Assemble Brake parts as shown to the left.
3. Adjust the two outer bolts to maintain required friction between the pads and the disk.
4. The two inner bolts must be locked in position by the two nuts on each bolt. Allow clearance between the head of these bolts and the top brake pad.

Note:

This brake is meant to dampen the oscillations of the caster. It should not be used to lock the caster in place.

11	WASHER-3.00 NARROW RIM	01792	1
10	WASHER-2.50 NARROW RIM	01531	1
9	ROLL PIN-.375 X 1.0 HD	01647	1
8	SPRING	01646	2
7	WASHER-5 FLAT	01493	1
6	BOLT-.5 X 1.0 NC HEX	01603	1
5	NUT-.375 NC LOCK	01454	2
4	NUT-.375 NC FLANGE	01443	4
3	WASHER-.375 FLAT	01444	2
2	BOLT-.375 X 2.5 NC HEX	01458	4
1	PAD	01824	2
	DISK	01643	1
	DESCRIPTION	PART NO	QTY

⚠ WARNING

Implements with caster wheels should not be pulled faster than your ability to maintain control in the event that the wheels are forced to the side. Any irregular surface can cause caster wheels to be deflected to the side, which could cause the entire baler/accumulator unit to swerve. This may cause you to lose control and have an accident.

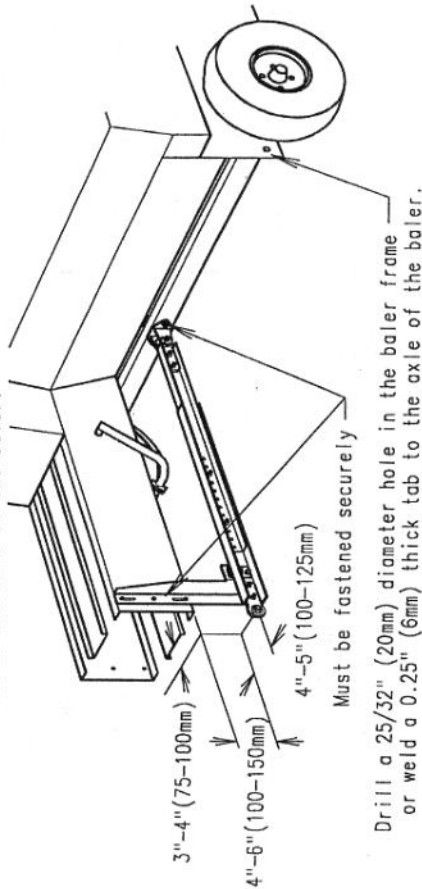
HOELSCHER

CASTER BRAKE ASS'Y & ADJUSTMENT

SERIAL NO: 02500-CURRENT

1: Basic hitch requirements.

If your baler does not have a hitch, as shown below, one will need to be added. Do not use a hitch that only attaches to the bottom of the bale chamber. Structural damage may result to the baler. To keep the bale chamber from flexing, supports may need to be added. Balers with hitches under the center of the bale chamber will work, if the hitch attaches to the axle of the baler.

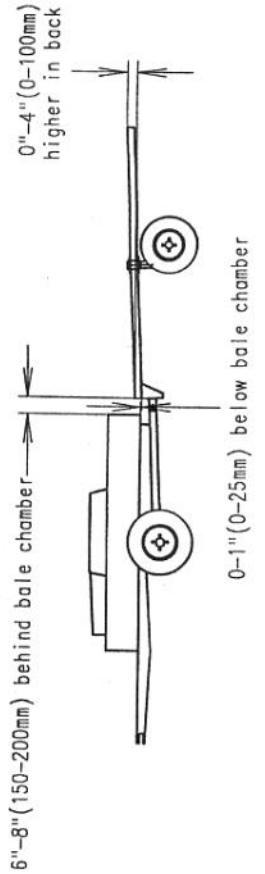


Drill a 25/32" (20mm) diameter hole in the baler frame or weld a 0.25" (6mm) thick tab to the axle of the baler.

2: Accumulator installation.

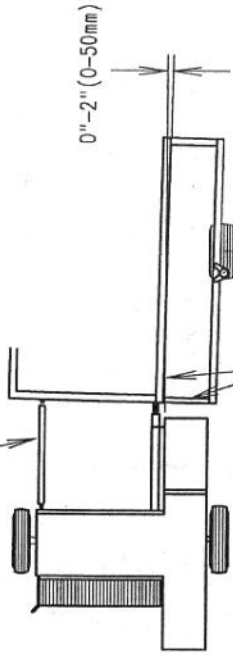
With the accumulator attached to the hitch of the baler, you should be able to obtain the dimensions shown below. The most important dimension is the relationship of the front of the accumulator to the bottom and right side of the bale chamber. It should be flush on bottom and the vertical part of the accumulator's bale chute should align with the right side of the bale chamber. This can be adjusted with the clevis hitch on front of the accumulator.

It's best to make the accumulator as level as possible, however with some balers, it is not possible to achieve the 0-4" difference. Excessive angle may cause the bales to become bowed, or to slide forward while on the bed. Lowering the front of the baler may help.



3: Aligning the Accumulator.

The stabilizer hitch may be adjusted, in order to align the accumulator with the baler. The accumulator should either be in-line with the baler, or angled slightly to the left, as shown below.



The bales should slide against the vertical portion of the bale chute and over the top of the accumulator.

4: To lower front of baler (if necessary)

If the back of the accumulator is too high, compared to the front it may be necessary to lower the front of the baler. On some models of balers this may be done by moving the hitch to the top of the tongue, as shown below. **NOTICE:** Do not move the hitch so far as to bind the PTO drive shaft.



⚠ WARNING

Because the accumulator will cause a change in balance of the baler, the hitch pin should be secured with a clip to prevent the baler from unhitching from the tractor. Do not tow at speeds in excess of 15 mph (24 kph)

HOELSCHER

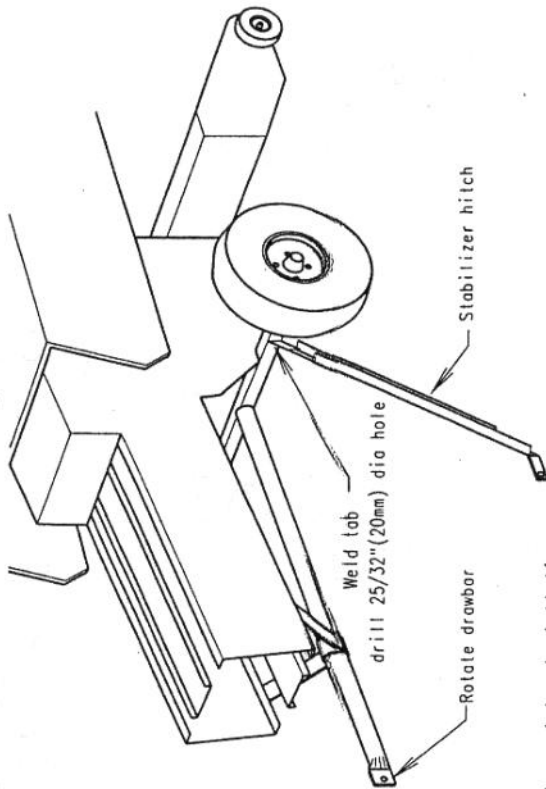
ATTACHING TO CONVENTIONAL BALER

SERIAL NO.: 01161-CURRENT

1: Basic hitch requirements.

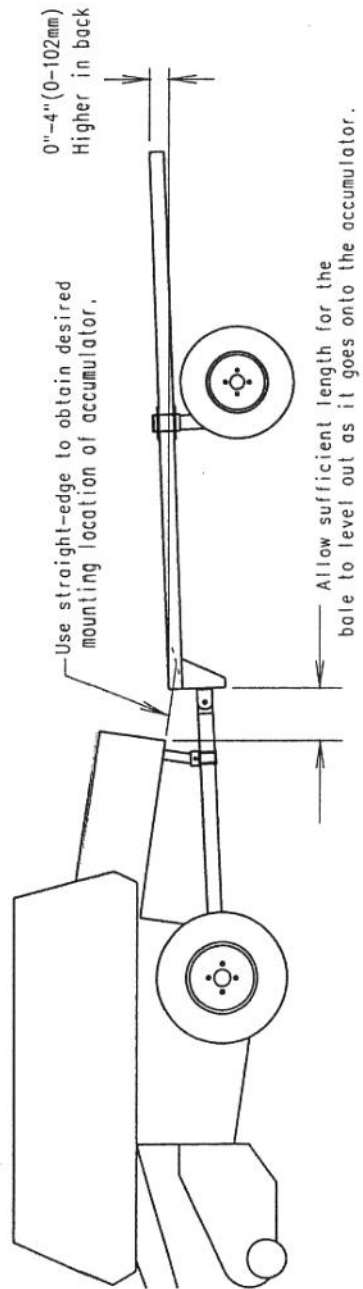
The wagon hitch supplied by the baler manufacturer should be satisfactory for pulling the accumulator. You will need to rotate the drawbar, so that the hitch pin will be horizontal, instead of vertical, as shown below.

Weld a 0.25"(6mm) thick tab to the axle of the baler, for attaching the stabilizer hitch. It should be as far to the "right" as possible, without interfering with the tire.



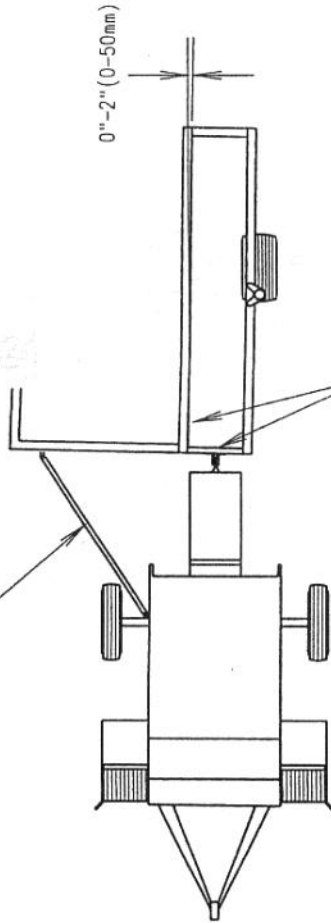
2: Accumulator installation.

Due to the angle of the baler's chamber, the accumulator must be mounted far enough back to allow the bales to transition from the baler onto the accumulator. This can be simulated by placing a straight-edge inside the bale chamber, and visualizing where the bale will contact the accumulator. The accumulator should be as level as possible.



3: Aligning the Accumulator.

The stabilizer hitch may be adjusted, in order to align the accumulator with the baler. The accumulator should either be in-line with the baler, or angled slightly to the left, as shown below.



The bales should slide against the vertical portion of the bale chute and over the top of the accumulator frame.

⚠ WARNING

Because the accumulator will cause a change in balance of the baler, the hitch pin should be secured with a clip to prevent the baler from unhitching from the tractor. Do not tow at speeds in excess of 15 mph (24 kph)

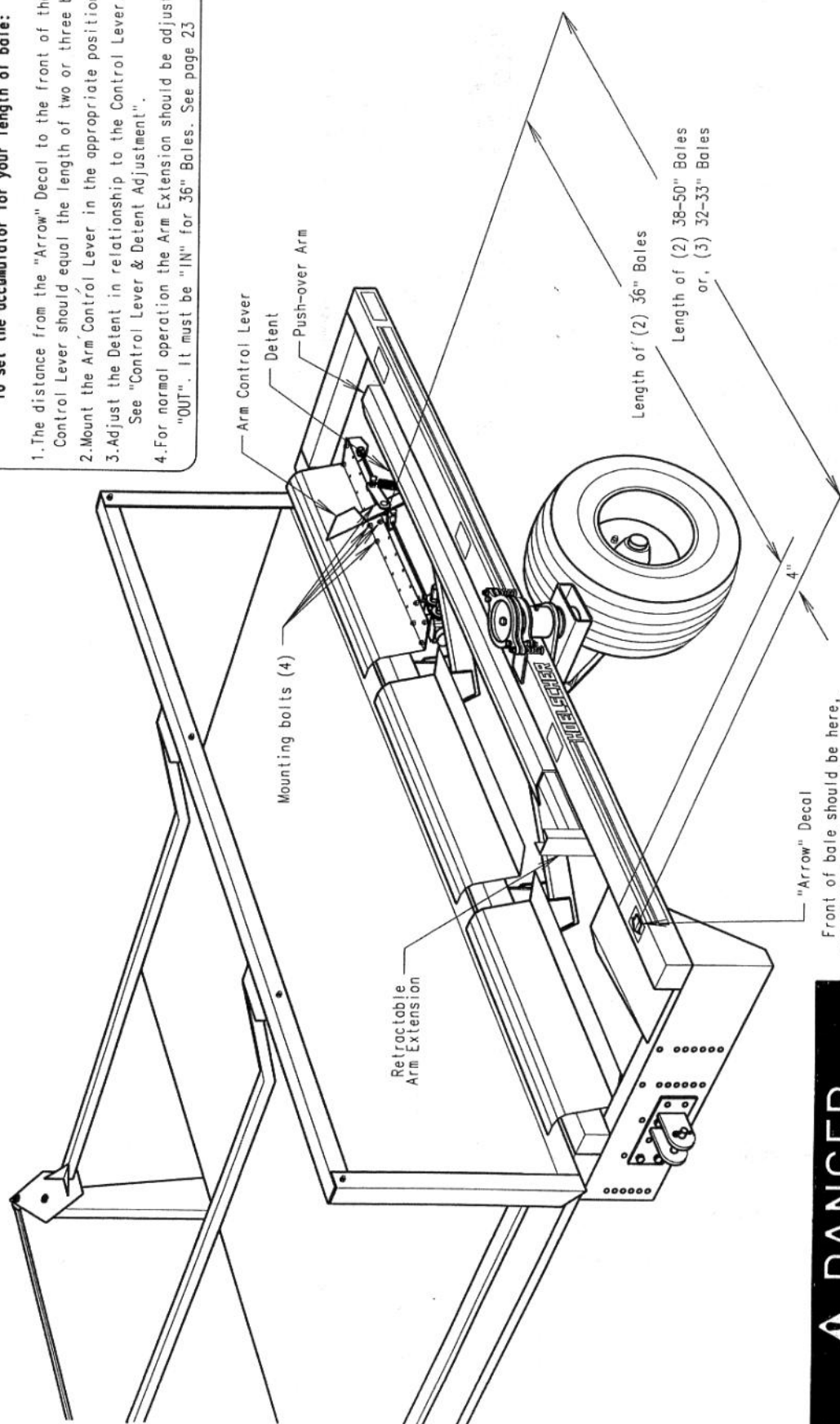
HOELSCHER

ATTACHING TO CENTER-LINE BALER

SERIAL NO.: 01161-CURRENT

To set the accumulator for your length of bale:

1. The distance from the "Arrow" Decal to the front of the Arm Control Lever should equal the length of two or three bales.
2. Mount the Arm Control Lever in the appropriate position.
3. Adjust the Detent in relationship to the Control Lever. See "Control Lever & Detent Adjustment".
4. For normal operation the Arm Extension should be adjusted "OUT". It must be "IN" for 36" Bales. See page 23



Front of bale should be here, when Push-over Arm begins to raise. (36" bales will be 4" behind here)

! DANGER

Do not attempt this adjustment, without first disengaging the hydraulic system and stopping the tractor. Serious personal injury, or death may result, if safety precautions are not taken.

HOELSCHER
BALE LENGTH ADJUSTMENT
 SERIAL NO.: 04336-CURRENT

Notice:

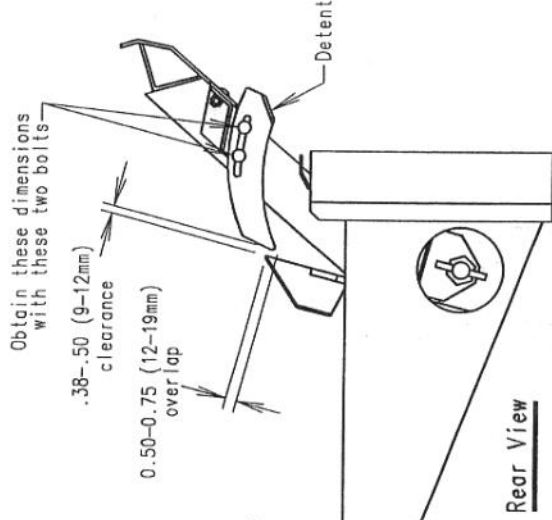
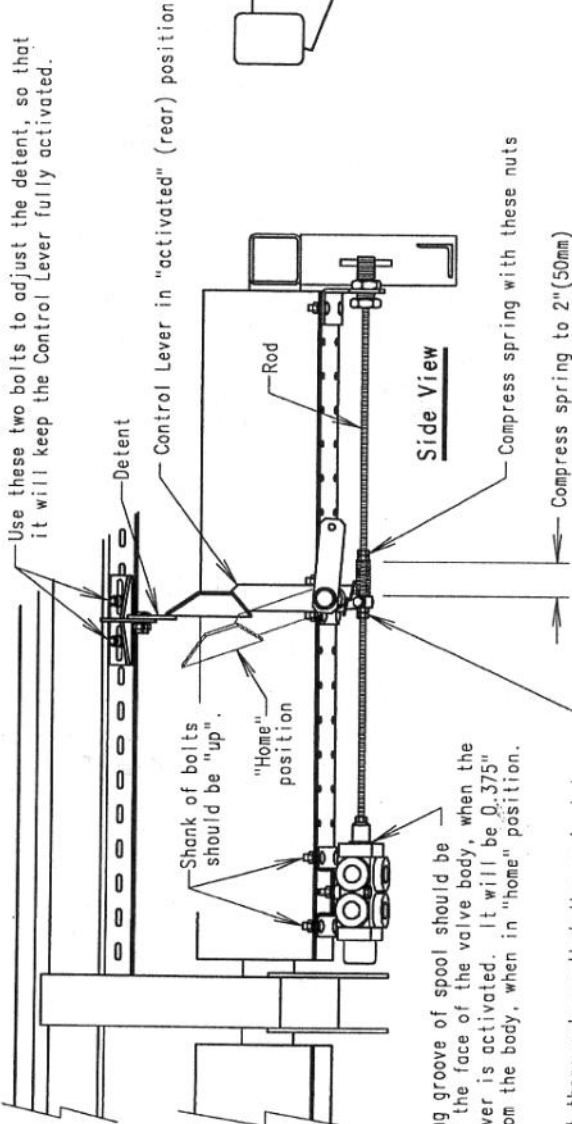
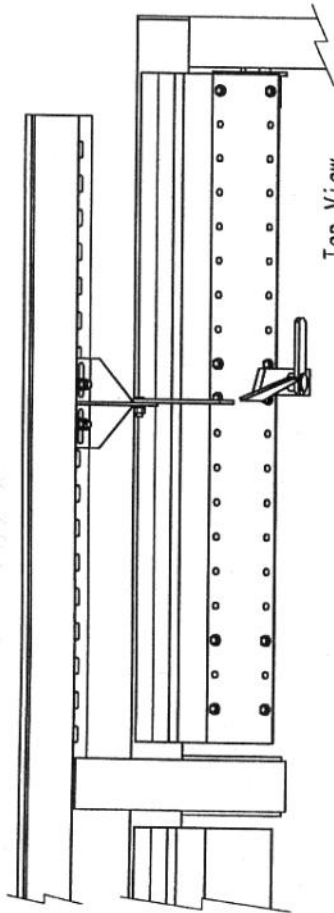
The purpose of the Detent, is to hold the Control Lever in the "activated" (rear) position, so that the Push-over Arm will complete it's cycle in a consistent speed. The Detent must hold the Control Lever tightly, in order to keep the spool of the valve pushed in positively. Improper adjustment of the Detent will cause erratic operation of the Push-over Arm. This is the most critical adjustment on the accumulator.

! DANGER

Do not attempt this adjustment, without first disengaging the hydraulic system and stopping the tractor. Serious personal injury, or death may result, if safety precautions are not taken.

Adjustment Procedure:

1. Mount the Arm Control Lever in the desired position, as found in "Bale Length Adjustment".
2. With the Push-over Arm down and the hydraulic power off. Adjust the "front" nuts on the rod so that the Control Lever is "vertical" when in "rear" (activated) position.
3. Adjust the "rear" nuts on the rod to compress the Spring to 2" (50mm)
4. Position the Detent so that it will slide by the Control Lever as the Push-over Arm raises.
5. Start the tractor and engage hydraulic system.
6. Use the Actuating Screw to raise the Push-over Arm. See "Use of Actuating Screw".
7. Disengage the hydraulic system and stop the tractor engine.
8. Adjust the Detent to obtain the dimensions, as shown on this page.
9. Start the tractor, energize the hydraulic system and lower the Push-over Arm back down with the Actuating Screw.



Obtain these dimensions with these two bolts

.38-.50 (9-12mm)

clearance

0.50-0.75 (12-19mm)

over lap

Use these two bolts to adjust the detent, so that it will keep the Control Lever fully activated.

Shank of bolts should be "up".

"Home" position

Snap-ring groove of spool should be flush with the face of the valve body, when the Control Lever is activated. It will be 0.375" (9.5mm) from the body, when in "home" position.

Adjust these nuts so that the control lever will be vertical when in the rear position.

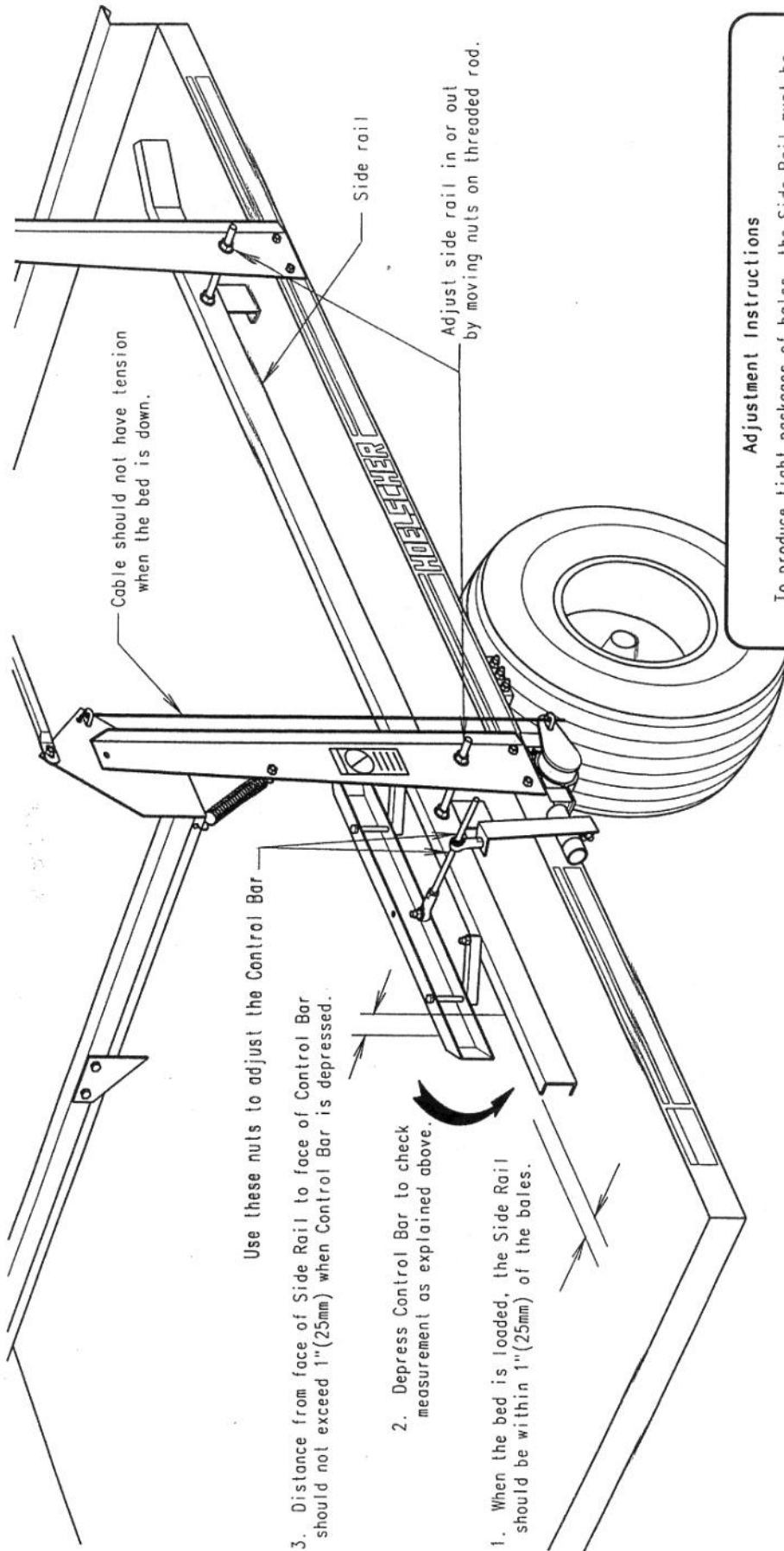
Compress spring with these nuts

Compress spring to 2" (50mm)

HOELSCHER

CONTROL LEVER & DETENT ADJUSTMENT

SERIAL NO.: 01161-CURRENT



Use these nuts to adjust the Control Bar

3. Distance from face of Side Rail to face of Control Bar should not exceed 1" (25mm) when Control Bar is depressed.

2. Depress Control Bar to check measurement as explained above.

1. When the bed is loaded, the Side Rail should be within 1" (25mm) of the bales.

Adjustment Instructions

To produce tight packages of bales, the Side-Rail must be adjusted so that it holds the bales tight together.

After the Side-Rail is adjusted, the Control Bar must be adjusted in relation to it. When the Control Bar is depressed it should be within 1.0" (25mm) of the Side-Rail.

If the Control Bar extends more than 1" inside the Side-Rail, it may catch the second bale, as the bales are sliding off.

⚠ WARNING

Never attempt any adjustment, without first disengaging the hydraulic system and stopping the tractor. Personal injury may result if safety precautions are not taken.

HOELSCHER

SIDE RAIL & CONTROL BAR ADJUSTMENT
 SERIAL NO.: 02624-CURRENT

NOTICE

Improper setting of the accumulator, for the type of hydraulic system being used, may cause excessive heat in the system. This can damage components of the hydraulic system.

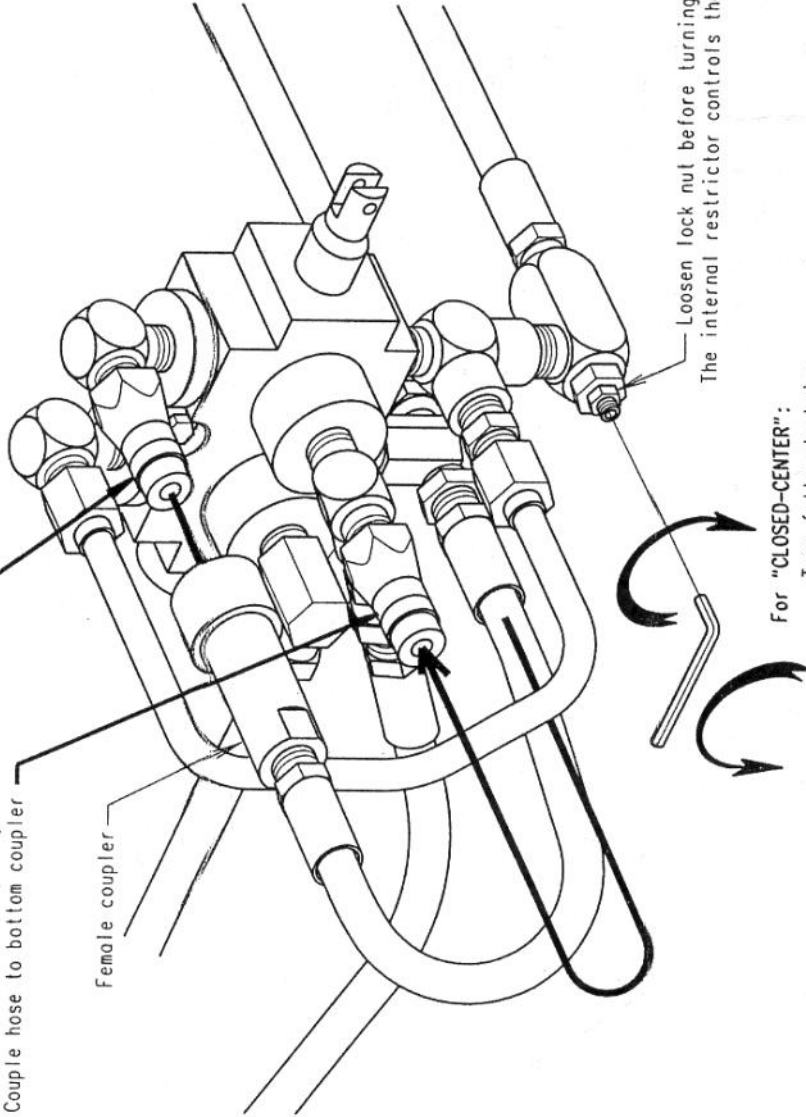
For "CLOSED-CENTER" hydraulic systems:

Couple hose to top couler

For "OPEN-CENTER" hyd. sys.:

Couple hose to bottom couler

Female coupler



Loosen lock nut before turning screw
The internal restrictor controls the rate of decent of the bed.

For "CLOSED-CENTER":
Turn fully clockwise.

For "OPEN-CENTER":

Adjust for desired rate of decent of the bed.
(clockwise=slower, counter-clockwise=faster)

Instructions

Changing from one type of hydraulic system to another, requires three procedures:

1. Check your tractor's operator's manual for the proper hydraulic system.
2. Attach the female coupler to the proper male tip on the valve.
3. Properly set and lock the adjusting screw of the restrictor, as shown.

With a "closed-center" setting, both the Push-over Arm and Bed will be power up and down. With an open-center setting, the arm will be powered both ways, but the Bed will go down by gravity only.

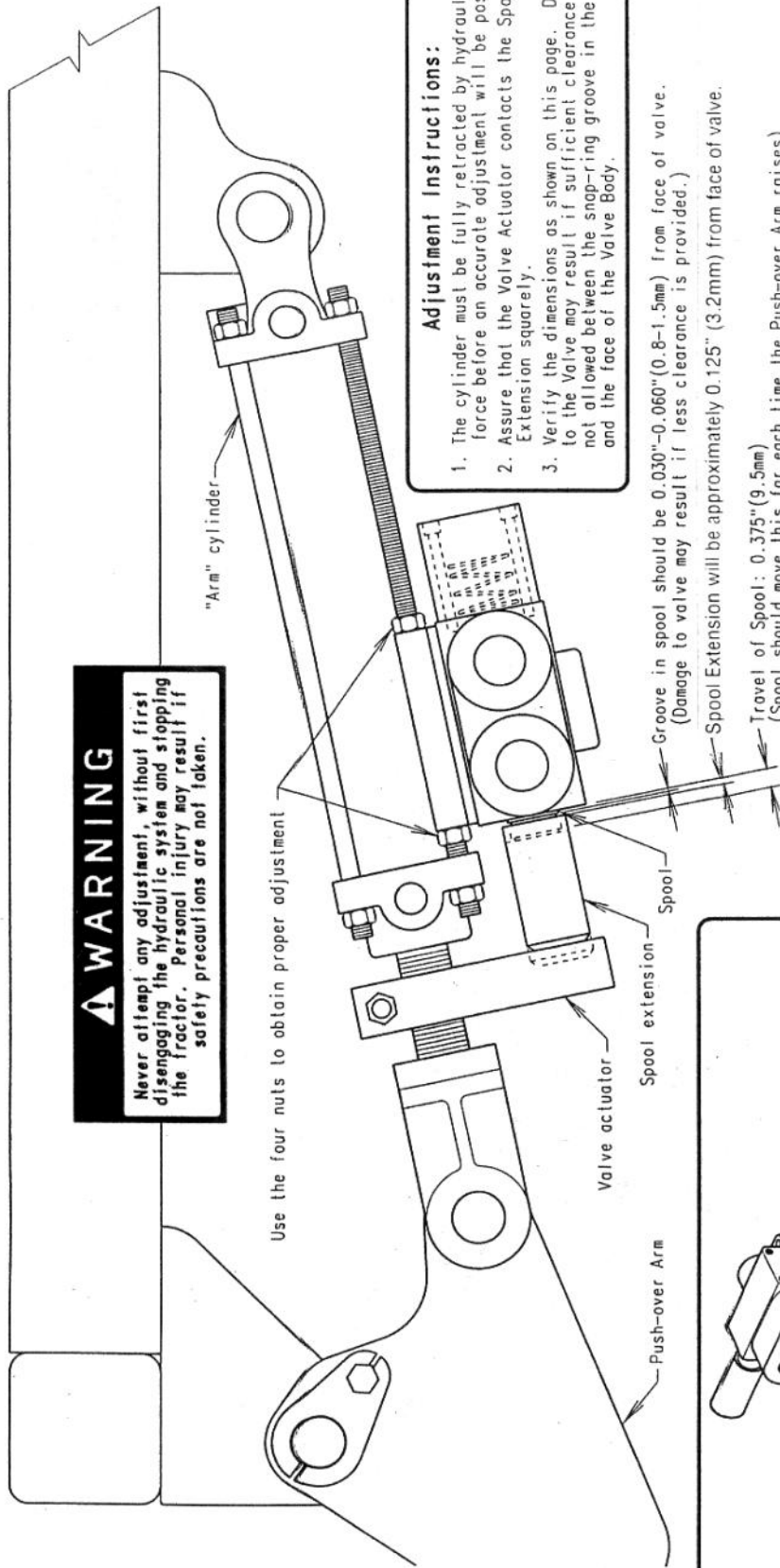
With an "open-center" system, it is important to have the least amount of restriction in the return hose as possible. It may be necessary to by-pass the tractor remote outlet on the return hose, and dump the oil directly into the tractor's reservoir.

Normally, a "load-sensing" system should be treated as an open-center system. Be sure to use the "priority" valve of the tractor (if it has one), and reduce the flow of oil to the minimum necessary for proper operation of the accumulator.

HOELSCHER

HYDRAULIC SYSTEM CONVERSION

SERIAL NO.: 02857-CURRENT



WARNING
 Never attempt any adjustment, without first disengaging the hydraulic system and stopping the tractor. Personal injury may result if safety precautions are not taken.

Adjustment Instructions:

1. The cylinder must be fully retracted by hydraulic force before an accurate adjustment will be possible.
2. Assume that the Valve Actuator contacts the Spool Extension squarely.
3. Verify the dimensions as shown on this page. Damage to the Valve may result if sufficient clearance is not allowed between the snap-ring groove in the Spool and the face of the Valve Body.

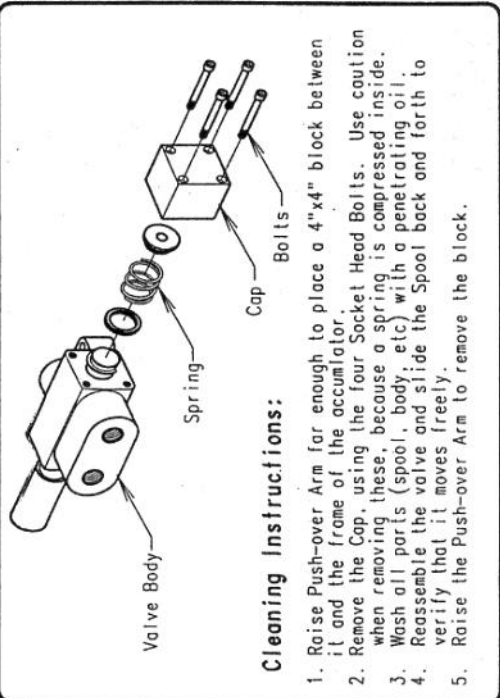
Groove in spool should be 0.030"-0.060" (0.8-1.5mm) from face of valve.
 (Damage to valve may result if less clearance is provided.)

Spool Extension will be approximately 0.125" (3.2mm) from face of valve.

Travel of Spool: 0.375" (9.5mm)
 (Spool should move this far each time the Push-over Arm raises)

Notice:

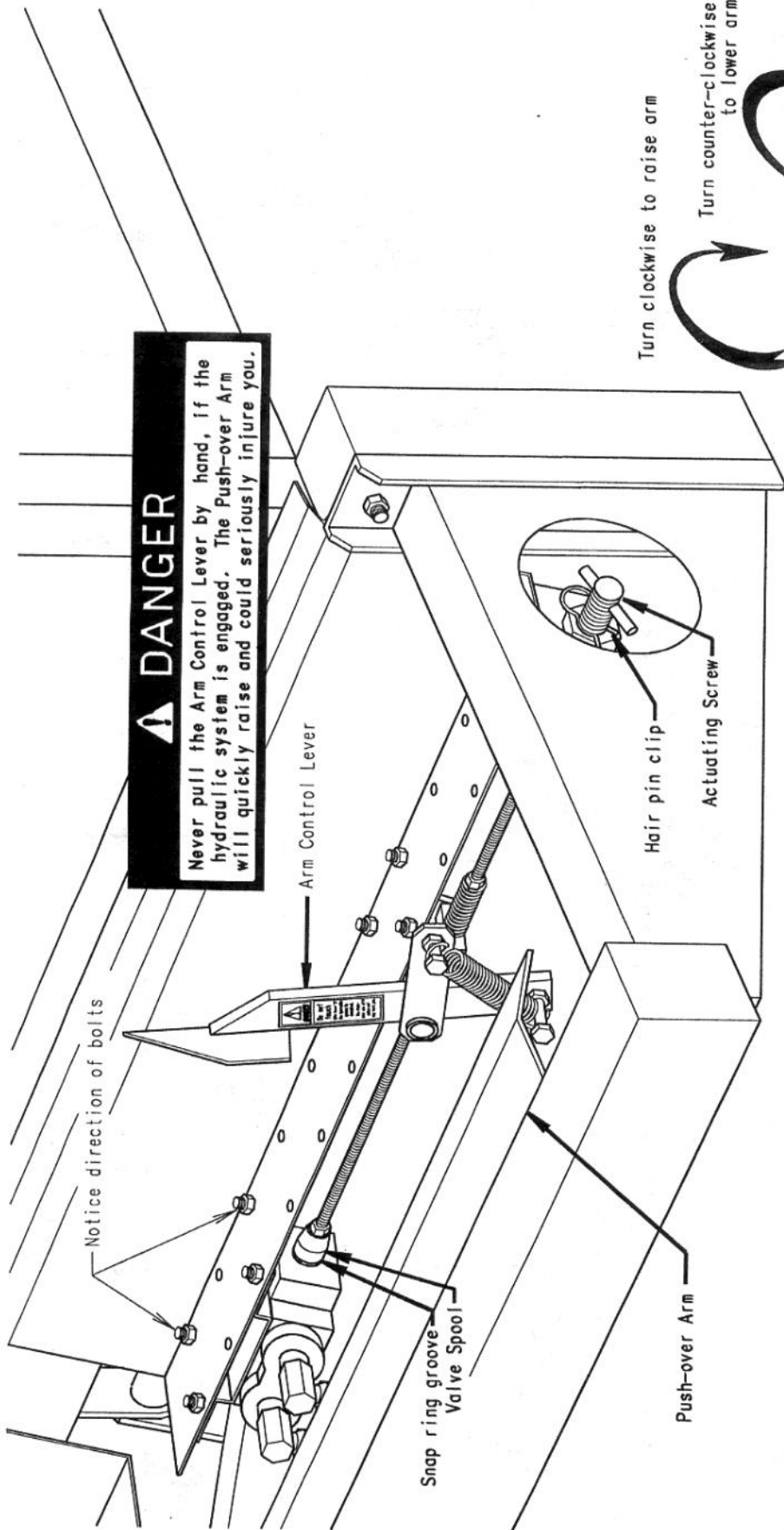
The purpose of the Safety Valve, is to prevent the Bed from raising whenever the Push-over Arm is not completely down. Each time the Push-over Arm raises, the spool of the Safety Valve should extend out 0.375" (9.5mm). If the spool of this valve sticks, the Push-over Arm may raise up normally, but it may go down slowly, or not at all. Periodically check for proper operation of the Safety Valve. It's Spool should extend out by spring force, when the Push-over Arm raises. Dust in the Cap may cause the Spool to stick and be ineffective. Clean as explained on this page.



Cleaning Instructions:

1. Raise Push-over Arm far enough to place a 4"x4" block between it and the frame of the accumulator.
2. Remove the Cap, using the four Socket Head Bolts. Use caution when removing these, because a spring is compressed inside.
3. Wash all parts (spool, body, etc) with a penetrating oil.
4. Reassemble the valve and slide the Spool back and forth to verify that it moves freely.
5. Raise the Push-over Arm to remove the block.

HOELSCHER
 SAFETY VALVE ADJUSTMENT
 SERIAL NO.: 01161-CURRENT

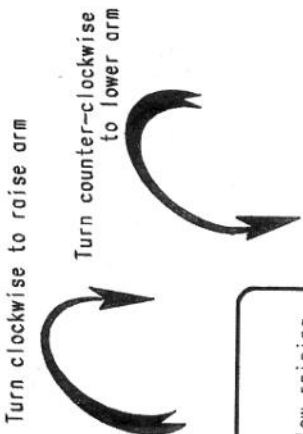


⚠ DANGER
 Never pull the Arm Control Lever by hand, if the hydraulic system is engaged. The Push-over Arm will quickly raise and could seriously injure you.

Use of Actuating Screw:
 The purpose of the Actuating Screw, is to allow raising the Push-over Arm to check adjustments or to remove a bale which has been trapped under the arm.

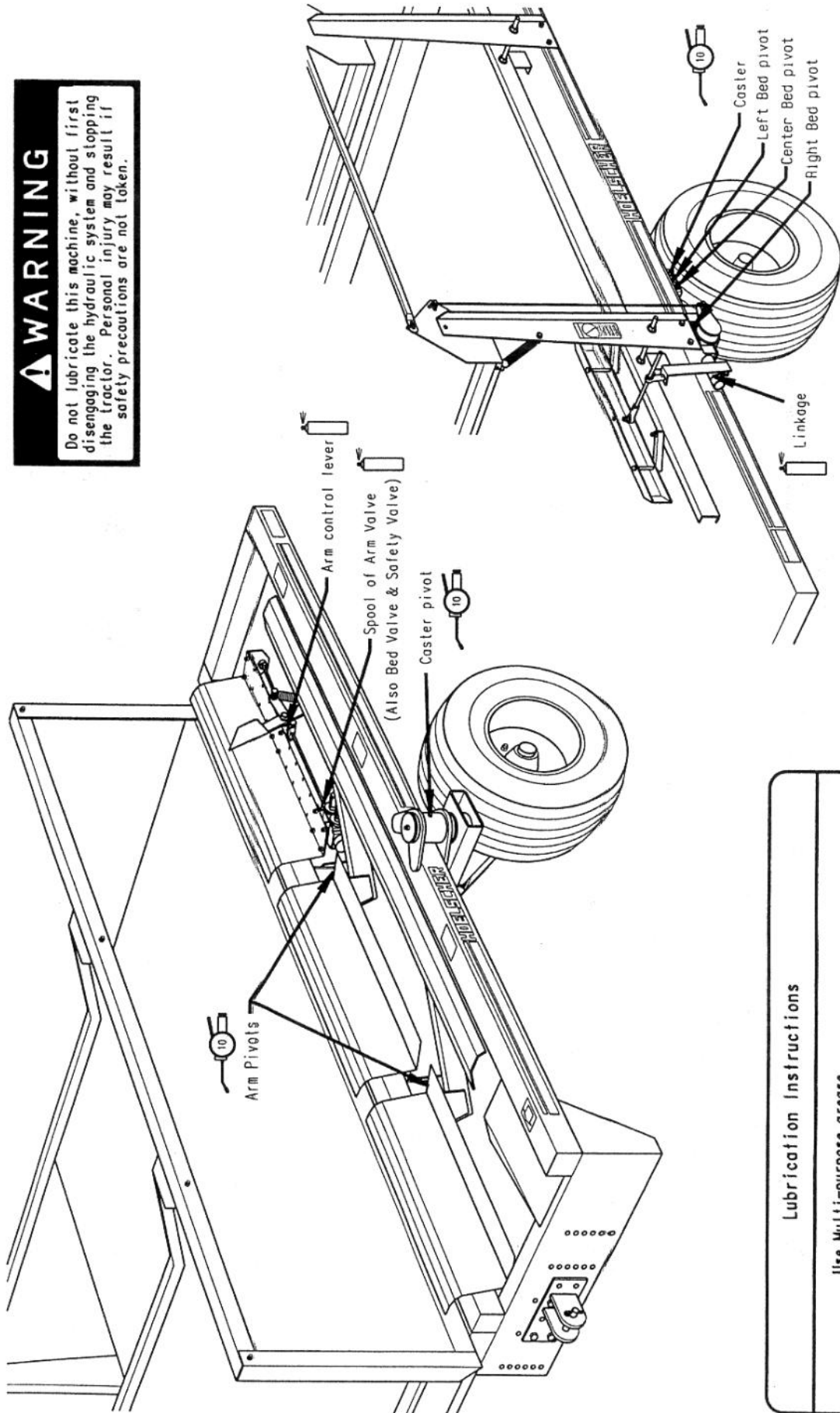
⚠ WARNING
 Keep everyone clear of the Arm Control Lever and Push-over Arm, when turning the Actuating Screw.

- Instructions:**
1. Start tractor and energize the hydraulic system.
 2. Remove the hair pin clip from the Actuating Screw.
 3. Turn the Actuating Screw fully clockwise. The snap-ring groove of the valve spool should now be against the body of the valve and the Push-over Arm should be up.
 4. De-energize the hydraulic system and stop the tractor.
 5. Perform necessary maintenance. (dislodging a bale, etc)
 6. Start tractor and energize the hydraulic system.
 7. Turn the Actuating Screw counter-clockwise, the Push-over Arm will return down.
 8. Replace the hair pin clip.
 9. Resume baling.



HOELSCHER
 USE OF ACTUATING SCREW
 SERIAL NO.: 01161-CURRENT

WARNING
 Do not lubricate this machine, without first disengaging the hydraulic system and stopping the tractor. Personal injury may result if safety precautions are not taken.

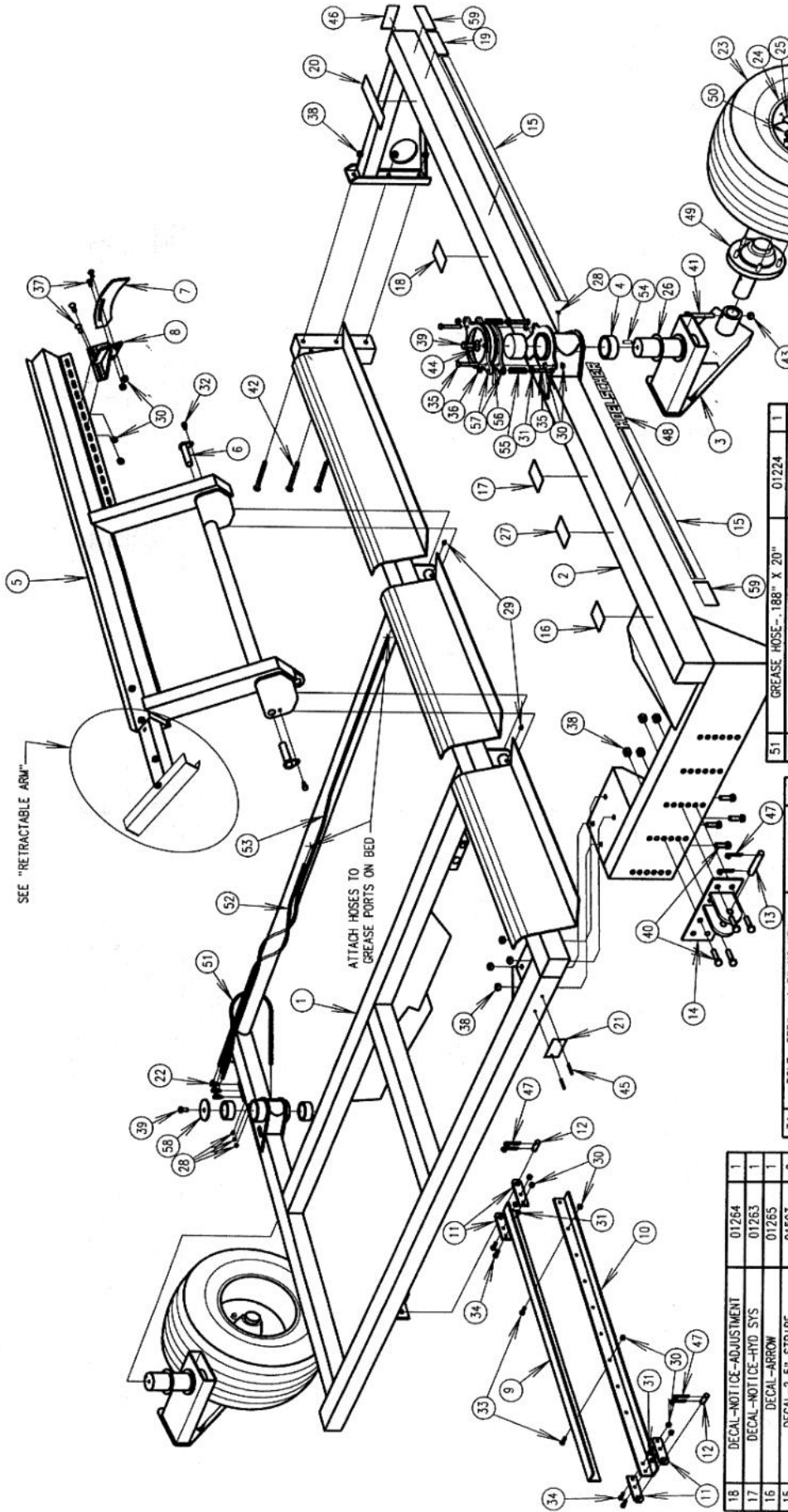


Lubrication Instructions

Use Multi-purpose grease.
 Lubricate in frequency of hours shown on each symbol.
 Do not allow excessive grease to collect on or around parts.

Use light penetrating oil.
 Lubricate as necessary for free operation of parts.

HOELSCHER
 LUBRICATION
 SERIAL NO.: 02624-CURRENT



SEE "RETRACTABLE ARM"

ATTACH HOSES TO GREASE PORTS ON BED

59	DECAL-AMBER REFLECTOR	01771	1
58	CAP	01856	1
57	BRAKE PAD	01824	2
56	BRAKE DISK	01643	1
55	SPRING-.75 X 1.0 COMPRESSION	01648	2
54	ROLL PIN-.375 X 1.0 HD	01647	1
53	GREASE HOSE-.188" X 86"	01226	1
52	GREASE HOSE-.188" X 44"	01225	1

HOELSCHER

1000 ACCUMULATOR

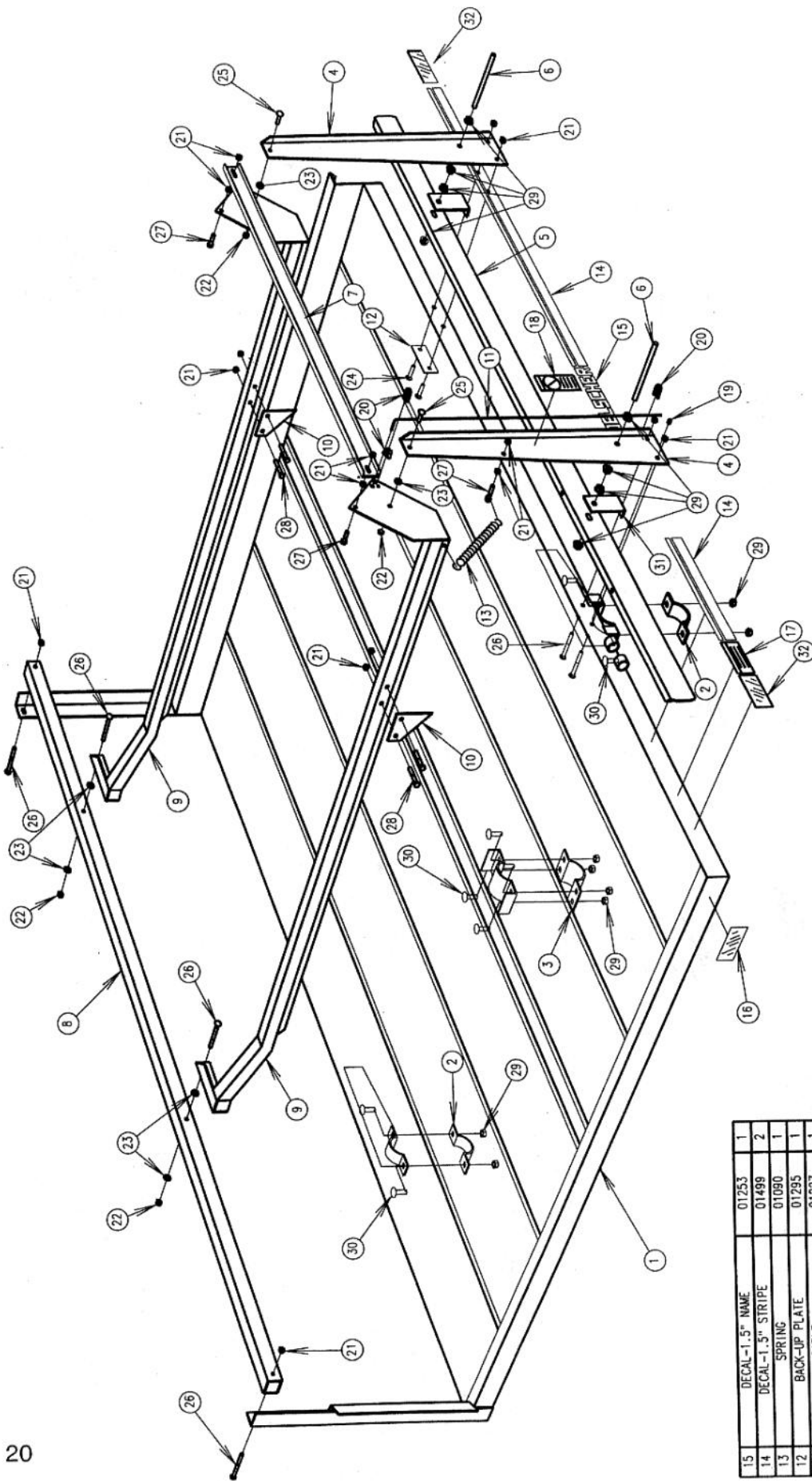
FRAME ASSEMBLY

SERIAL NO.: 04336-CURRENT

1	1	01224	1
2	2	01987	10
3	2	01805	2
4	1	01122	1
5	6	01570	6
6	1	01770	1
7	2	01452	2
8	1	01483	1
9	1	01787	2
10	3	01451	3
11	2	01879	2
12	8	01450	8
13	2	01603	2
14	11	01449	11
15	4	01448	4
16	2	01454	2
17	4	01458	4

18	4	01447	4
19	2	01446	2
20	2	01445	2
21	6	01444	6
22	14	01443	14
23	2	01442	2
24	4	01441	4
25	1	01896	1
26	2	01531	2
27	2	01440	2
28	2	01806	2
29	2	01810	2
30	3	01545	3
31	1	01254	1
32	1	01370	1
33	1	01262	1

NO	DESCRIPTION	PART NO	QTY
18	DECAL-NOTICE-ADJUSTMENT	01264	1
17	DECAL-NOTICE-HYD SYS	01263	1
16	DECAL-ARROW	01265	1
15	DECAL-2.5" STRIPE	01593	2
14	HITCH CLEVIS	01026	1
13	PIN-.75" X 3.5"	01080	1
12	PIN-.75" X 2.0"	01079	2
11	CLEVIS	01027	4
10	DRAWBAR	01030	1
9	DRAWBAR	01029	1
8	DETENT MOUNT	01062	1
7	DETENT	01012	1
6	PIN	01123	2
5	PUSH-OVER ARM WELDMENT	02168	1
4	BUSHING	01433	4
3	CASTER WELDMENT	01804	2
2	DETACHABLE FRAME	01228	1
1	FRAME WELDMENT	01230	1
NO	DESCRIPTION	PART NO	QTY



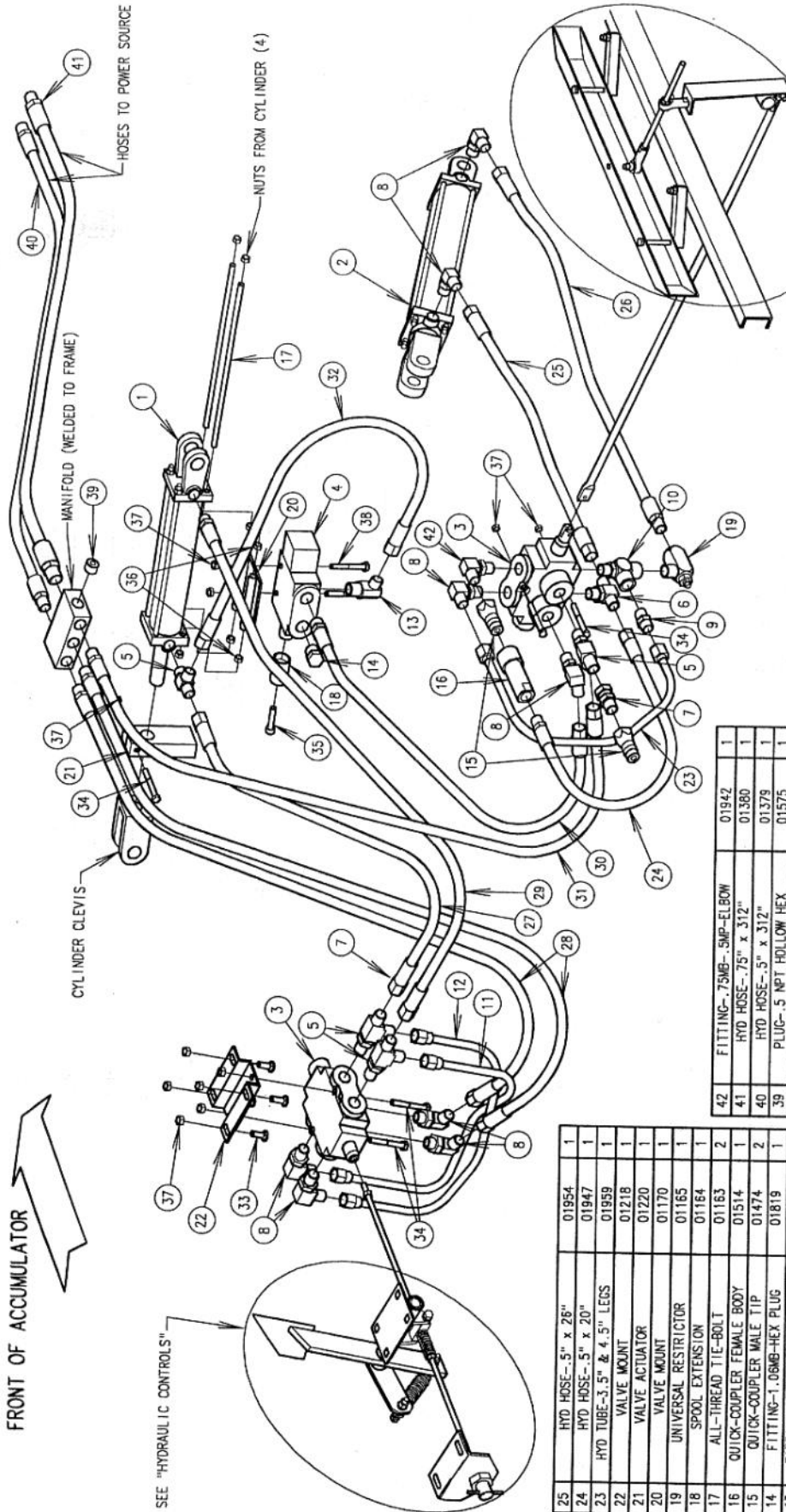
HOELSCHER
1000 ACCUMULATOR
BED ASSEMBLY
 SERIAL NO.: 03066-CURRENT

NO	DESCRIPTION	PART NO	QTY
15	DECAL-1.5" NAME	01253	1
14	DECAL-1.5" STRIPE	01499	2
13	SPRING	01090	1
12	BACK-UP PLATE	01295	1
11	CABLE	01227	1
10	DOG	01063	2
9	HOLDOWN BAR	01281	2
8	MOUNT TUBE	01175	1
7	CONNECTING BAR	01064	1
6	ROD	01169	2
5	SIDE RAIL	01166	1
4	UPRIGHT	01381	2
3	4" SADDLE CAP	01076	1
2	2" SADDLE CAP	01075	2
1	BED WELDMENT	01835	1
NO	DESCRIPTION	PART NO	QTY

NO	DESCRIPTION	PART NO	QTY
24	BOLT-.375" x 1.0" NC-CARRIAGE	01448	2
23	WASHER-.375"-FLAT	01444	6
22	NUT-.375" NC-LOCK	01454	4
21	NUT-.375" NC-FLANGE	01443	16
20	CABLE CLAMP-.188"	01453	2
19	GREASE ZERK-.125"PT STR" T	01441	1
18	DECAL-WARNING-CRUSHING HAZARD	01261	1
17	DECAL-WARNING-STAY CLEAR	01262	1
16	DECAL- RED REFLECTOR	01770	1
NO	DESCRIPTION	PART NO	QTY

NO	DESCRIPTION	PART NO	QTY
32	DECAL-AMBER REFLECTOR	01771	1
31	LEG	01591	2
30	BOLT-.5" x 1.5" NC-CARRIAGE	01459	8
29	NUT-.5" NC-FLANGE	01449	8
28	BOLT-.375" x 2.5" NC-CARRIAGE	01548	4
27	BOLT-.375" x 1.5" NC-HEX	01447	3
26	BOLT-.375" x 3.0" NC-CARRIAGE	01457	6
25	BOLT-.375" x 1.5" NC-CARRIAGE	01456	2
NO	DESCRIPTION	PART NO	QTY

FRONT OF ACCUMULATOR



NOTICE

The accumulator may be used with either an OPEN-CENTER or CLOSED-CENTER hydraulic system. It must be set for the type of system in use. Damage to the hydraulic power source may occur, if the correct type of system is not used.

See "HYDRAULIC SYSTEM CONVERSION", in the Operator's Manual for details.

HOELSCHER

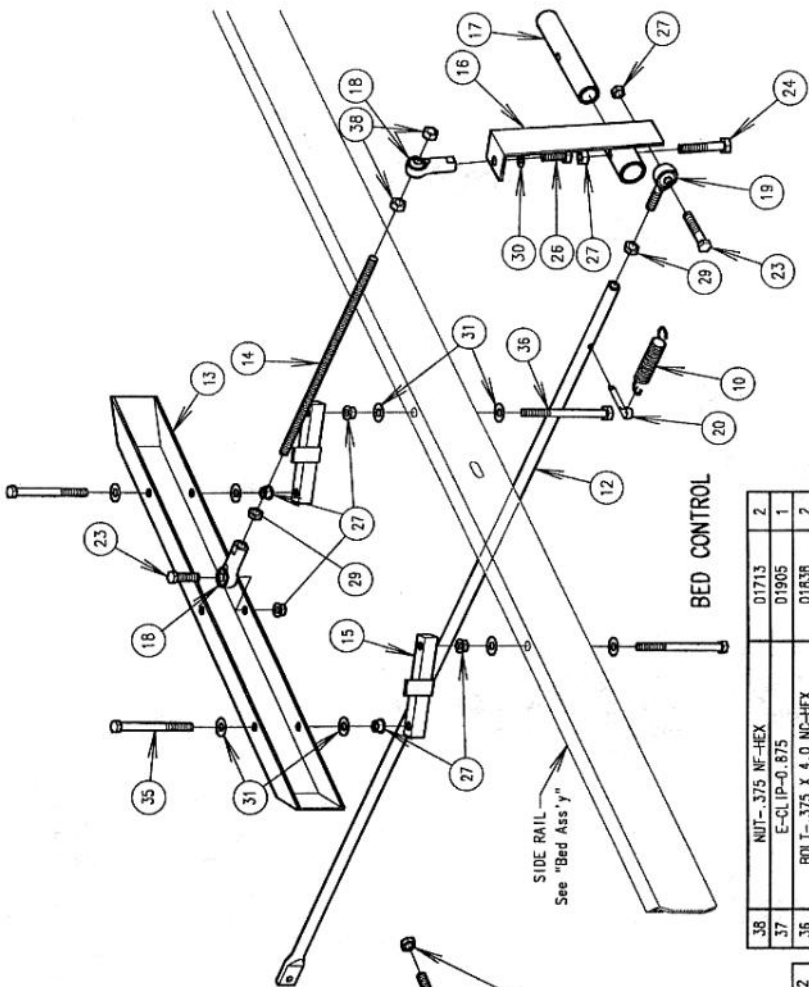
1000 ACCUMULATOR

HYDRAULIC SYSTEM ASSEMBLY

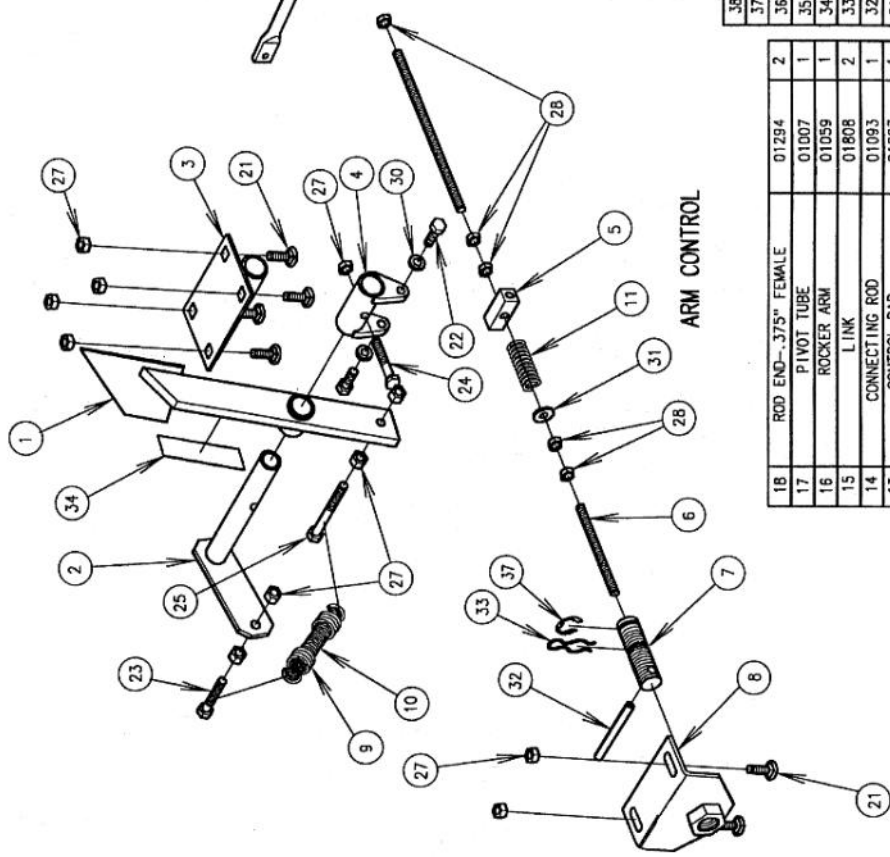
SERIAL NO.: 02857-CURRENT

NO	DESCRIPTION	PART NO	QTY
25	HYD HOSE--5" x 26"	01954	1
24	HYD HOSE--5" x 20"	01947	1
23	HYD TUBE--3.5" & 4.5" LEGS	01959	1
22	VALVE MOUNT	01218	1
21	VALVE ACTUATOR	01220	1
20	UNIVERSAL RESTRICTOR	01170	1
19	SPOOL EXTENSION	01165	1
18	ALL-THREAD TIE-BOLT	01164	1
17	QUICK-COUPLER FEMALE BODY	01163	2
16	QUICK-COUPLER MALE TIP	01514	1
15	FITTING--1.06MB-HEX PLUG	01474	2
14	FITTING--1.06MB-HEX PLUG	01819	1
13	FITTING--75MJ--1.06MB-ELBOW	01956	1
12	HYDRAULIC TUBE--3.5" LEGS	01937	1
11	HYDRAULIC TUBE--4.5" LEGS	01936	1
10	FITTING--75MB--SMP--TEE	01908	1
9	FITTING--SMP--75MJ--STRAIGHT	01944	1
8	FITTING--75MB--75MJ--90	01938	8
7	FITTING--SMP--75FJX-STRAIGHT	01943	1
6	FITTING--75MJ--75MB--75MJ--TEE	01939	1
5	FITTING--75MB--75MJ--75MJ--TEE	01941	4
4	VALVE	01236	1
3	VALVE	01235	2
2	HYDRAULIC CYLINDER--2.5"x10"	01923	1
1	HYDRAULIC CYLINDER--2"x8"	01922	1
NO	DESCRIPTION	PART NO	QTY

NO	DESCRIPTION	PART NO	QTY
42	FITTING--75MB--SMP--ELBOW	01942	1
41	HYD HOSE--7.5" x 312"	01360	1
40	HYD HOSE--5" x 312"	01378	1
39	PLUG--.5 NPT HOLLOW HEX	01575	1
38	BOLT--.375" x 2.0" NC HEX	01476	2
37	NUT--.375" NC FLANGE	01443	11
36	NUT--.375" NC HEX	01462	4
35	BOLT--.375" x 2.0" NC SOCKET HEAD	01475	1
34	BOLT--.375" x 2.5" SOCKET HEAD	01458	4
33	BOLT--.375" x 1.0" NC CARRIAGE	01448	4
32	HYD HOSE--5" x 15"	01955	1
31	HYD HOSE--5" x 72"	01948	1
30	HYD HOSE--5" x 72"	01949	1
29	HYD HOSE--5" x 60"	01951	1
28	HYD HOSE--5" x 60"	01950	2
27	HYD HOSE--5" x 48"	01952	1
26	HYD HOSE--5" x 34"	01953	1
NO	DESCRIPTION	PART NO	QTY



BED CONTROL



ARM CONTROL

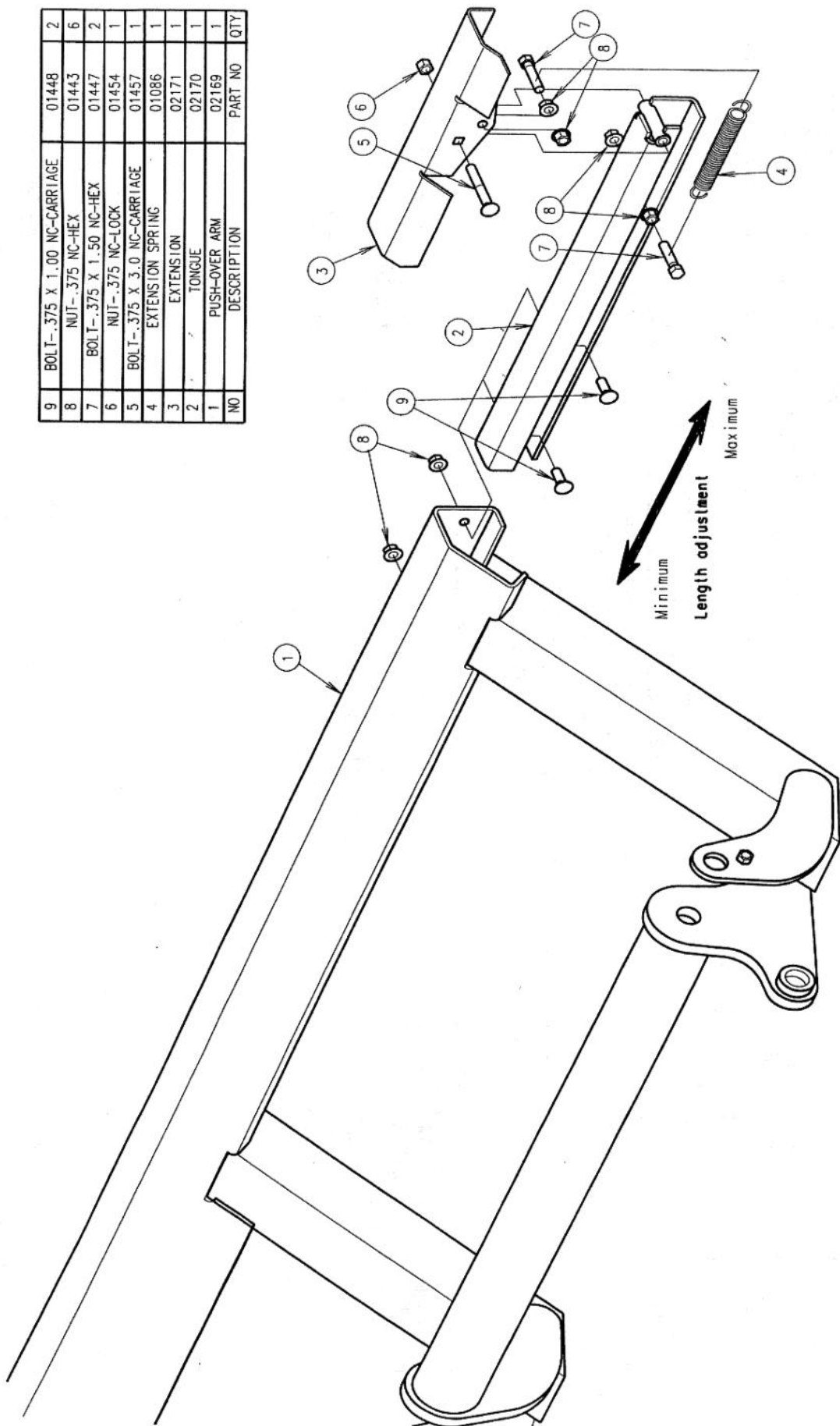
NO	DESCRIPTION	PART NO	QTY
38	NUT--.375 NF-HEX	01713	2
37	E-CLIP-0.875	01905	1
36	BOLT--.375 X 4.0 NC-HEX	01638	2
35	BOLT--.375 X 3.5 NC-HEX	01840	2
34	DECAL-DANGER	01395	1
33	CLIP--.188" x .75"-HAIR PIN	01478	1
32	PIN--.375" x 3.0"-ROLL	01477	1
31	WASHER--.375"-FLAT	01444	9
30	WASHER--.375"-LOCK	01461	3
29	NUT--.375" NF-JAM	01455	4
28	NUT--.375" NC-HEX	01462	5
27	NUT--.375" NC-FLANGE	01443	17
26	BOLT--.375" x 1.0" NF-HEX	01551	1
25	BOLT--.375" x 3.0" NC-HEX	01460	1
24	BOLT--.375" x 2.0" NC-HEX	01476	3
23	BOLT--.375" x 1.5" NC-HEX	01447	3
22	BOLT--.375" x .75" NC-HEX	01445	2
21	BOLT--.375" x 1.0" NC-CARRIAGE	01448	B
20	PIN--.25 X 1.5-COTTER	01570	1
19	ROD END--.375" MALE	01293	1

NO	DESCRIPTION	PART NO	QTY
18	ROD END--.375" FEMALE	01294	2
17	PIVOT TUBE	01007	1
16	ROCKER ARM	01059	1
15	LINK	01808	2
14	CONNECTING ROD	01093	1
13	CONTROL BAR	01807	1
12	CONTROL ROD	01249	1
11	COMPRESSION SPRING	01266	1
10	EXTENSION SPRING	01086	2
9	EXTENSION SPRING	01085	1
8	BULKHEAD BRACKET	01221	1
7	ACTUATING SCREW	01222	1
6	CONTROL ROD	01223	1
5	PIVOT BLOCK	01074	1
4	CONTROL FORK	01065	1
3	PIVOT MOUNT	01048	1
2	PIVOT	01054	1
1	ARM CONTROL LEVER	01053	1



1000 ACCUMULATOR
HYDRAULIC CONTROL ASS'YS
SERIAL NO.: 02524-CURRENT

NO	DESCRIPTION	PART NO	QTY
9	BOLT-.375 X 1.00 NC-CARRIAGE	01448	2
8	NUT-.375 NC-HEX	01443	6
7	BOLT-.375 X 1.50 NC-HEX	01447	2
6	NUT-.375 NC-LOCK	01454	1
5	BOLT-.375 X 3.0 NC-CARRIAGE	01457	1
4	EXTENSION SPRING	01086	1
3	EXTENSION	02171	1
2	TONGUE	02170	1
1	PUSH-OVER ARM	02169	1
	DESCRIPTION	PART NO	QTY



HOELSCHER
1000 ACCUMULATOR
RETRACTABLE ARM
AVAILABLE: TAUC05
SA1000-25

Adjustment:
 Use intermediate setting for (2) 38"-48" bores.
 Set to min. length for handling (2) 36" bores.
 Set to max. length for handling (3) 32" bores.

	DANGER
Do not touch the hydraulic system is energized. The push-over arm will raise and may hurt you. 01395	

DANGER
Part No: 01395

	WARNING
	CRUSHING HAZARD DO NOT WORK UNDER OR AROUND THIS MACHINE, WHILE THE HYDRAULIC SYSTEM IS ENGAGED. DISENGAGE THE HYDRAULIC SYSTEM AND STOP THE TRACTOR ENGINE BEFORE ATTEMPTING ANY MAINTENANCE. THE BED MUST BE BLOCKED BEFORE WORKING UNDER IT. FAILURE TO FOLLOW THESE PRECAUTIONS MAY RESULT IN INJURY. 01261

WARNING-Part No: 01261

	WARNING
	MOVING PARTS HAZARD DO NOT REACH BEYOND THIS POINT OR MOVE THE "ARM CONTROL LEVER" MANUALLY. THE "PUSH-OVER ARM" MAY RAISE AND INJURE YOU.

WARNING-Part No: 01370

	WARNING
	DISENGAGE THE HYDRAULIC SYSTEM AND STOP THE TRACTOR ENGINE BEFORE ATTEMPTING ANY ADJUSTMENT OR MAINTENANCE. USE THE "ACTUATING SCREW" IF IT IS NECESSARY TO RAISE THE "PUSH-OVER ARM." SEE THE OWNER'S MANUAL FOR INSTRUCTIONS. FAILURE TO FOLLOW THESE INSTRUCTIONS MAY RESULT IN PERSONAL INJURY. 01370

	WARNING
	STAY CLEAR OF THIS MACHINE. ALL OPERATIONS ARE AUTOMATIC. UNIT SWINGS WIDE WHILE TURNING. NEVER ALLOW RIDERS ON MACHINE. 01262

WARNING-Part No: 01262

	WARNING
	HIGH-PRESSURE FLUID HAZARD To prevent serious injury or death: <ul style="list-style-type: none"> • Relieve pressure on hydraulic system before servicing or disconnecting hoses. • Wear proper hand and eye protection when searching for leaks. Use wood or cardboard instead of hands. • Keep all components in good repair.

WARNING-Part No: 01896

	NOTICE
THE FRONT EDGE OF THE FRONT BALE SHOULD BE HERE WHEN THE "PUSH-OVER ARM" BEGINS TO RAISE. DISTANCE FROM HERE TO THE "ARM CONTROL LEVER" SHOULD EQUAL THE LENGTH OF TWO BALES. REFER TO THE OPERATOR'S MANUAL FOR COMPLETE ADJUSTING INSTRUCTIONS. 01265	

NOTICE-Part No: 01265

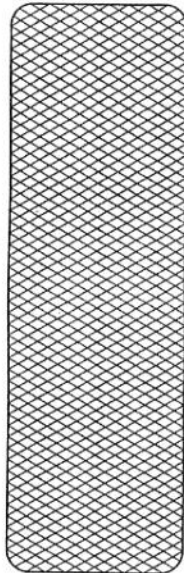
	NOTICE
TO PREVENT DAMAGE TO YOUR HYDRAULIC SYSTEM: THIS MACHINE IS DESIGNED FOR USE WITH OPEN CENTER OR CLOSED-CENTER HYDRAULIC SYSTEMS. IT MUST BE SET FOR THE SYSTEM OF INTENDED USE OR MECHANICAL DAMAGE MAY RESULT. SEE "HYDRAULIC SYSTEM CONVERSION", IN THE OPERATOR'S MANUAL FOR THIS MACHINE. 01263	

NOTICE-Part No: 01263

	NOTICE
	THE DETENT MUST CONTACT THE CONTROL LEVER WITH SUFFICIENT FORCE TO ACTIVATE THE VALVE. BE SURE THAT THE CONTROL LEVER IS VERTICAL WHEN IN THE REAR (ACTIVATED) POSITION AND THE VALVE SPOOL IS "IN". DO NOT PULL THE CONTROL LEVER BY HAND. THE PUSH-OVER ARM MAY RAISE AND INJURE YOU. 01264

NOTICE-Part No: 01264

HOELSCHER



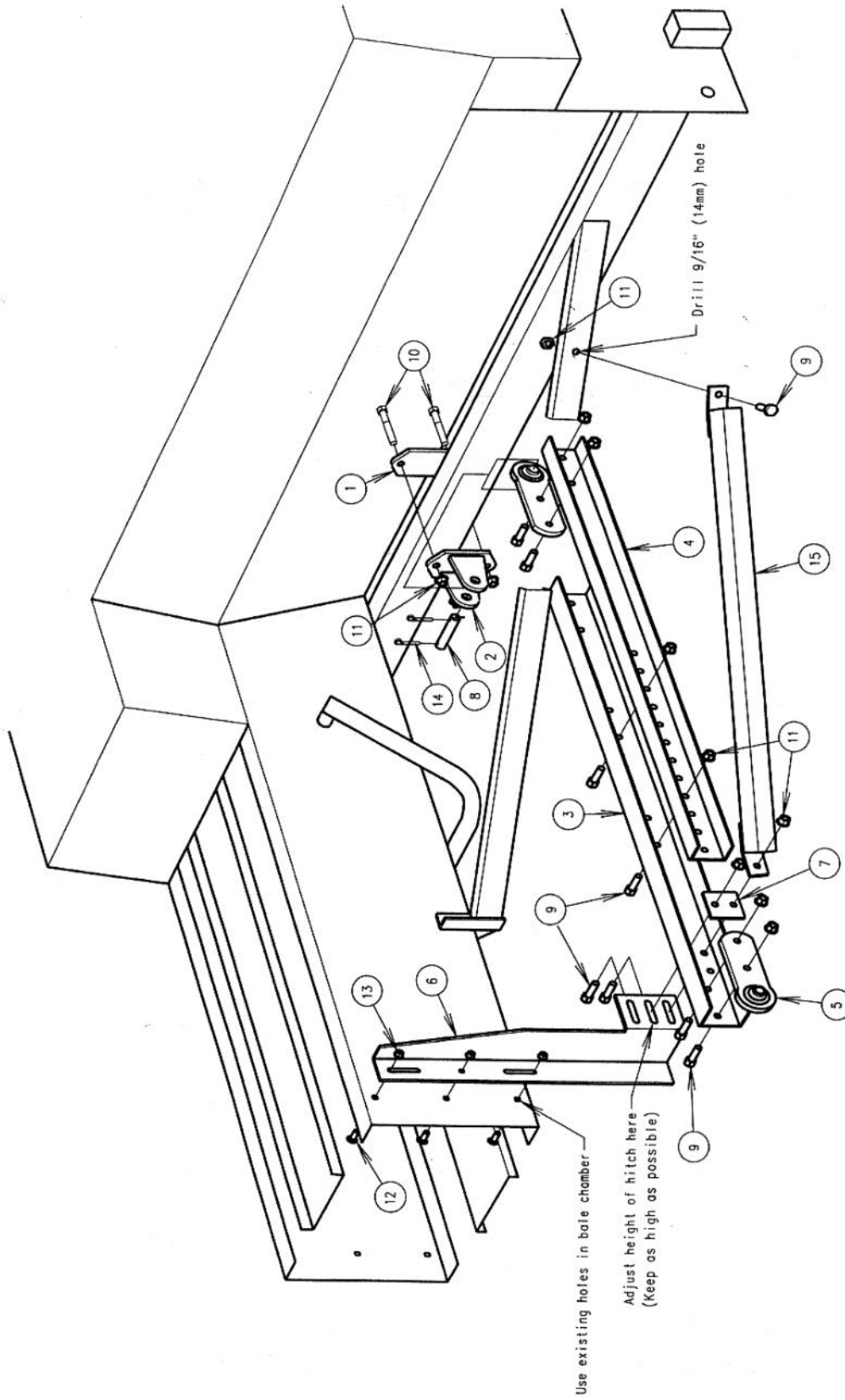
Reflector-Red Honeycomb-Part No: 01770
Reflector-Amber Honeycomb-Part No: 01771

2.5" Name-Part No: 01122
1.5" Name-Part No: 01253

2.5" Stripe-Part No: 01593
1.5" Stripe-Part No: 01499

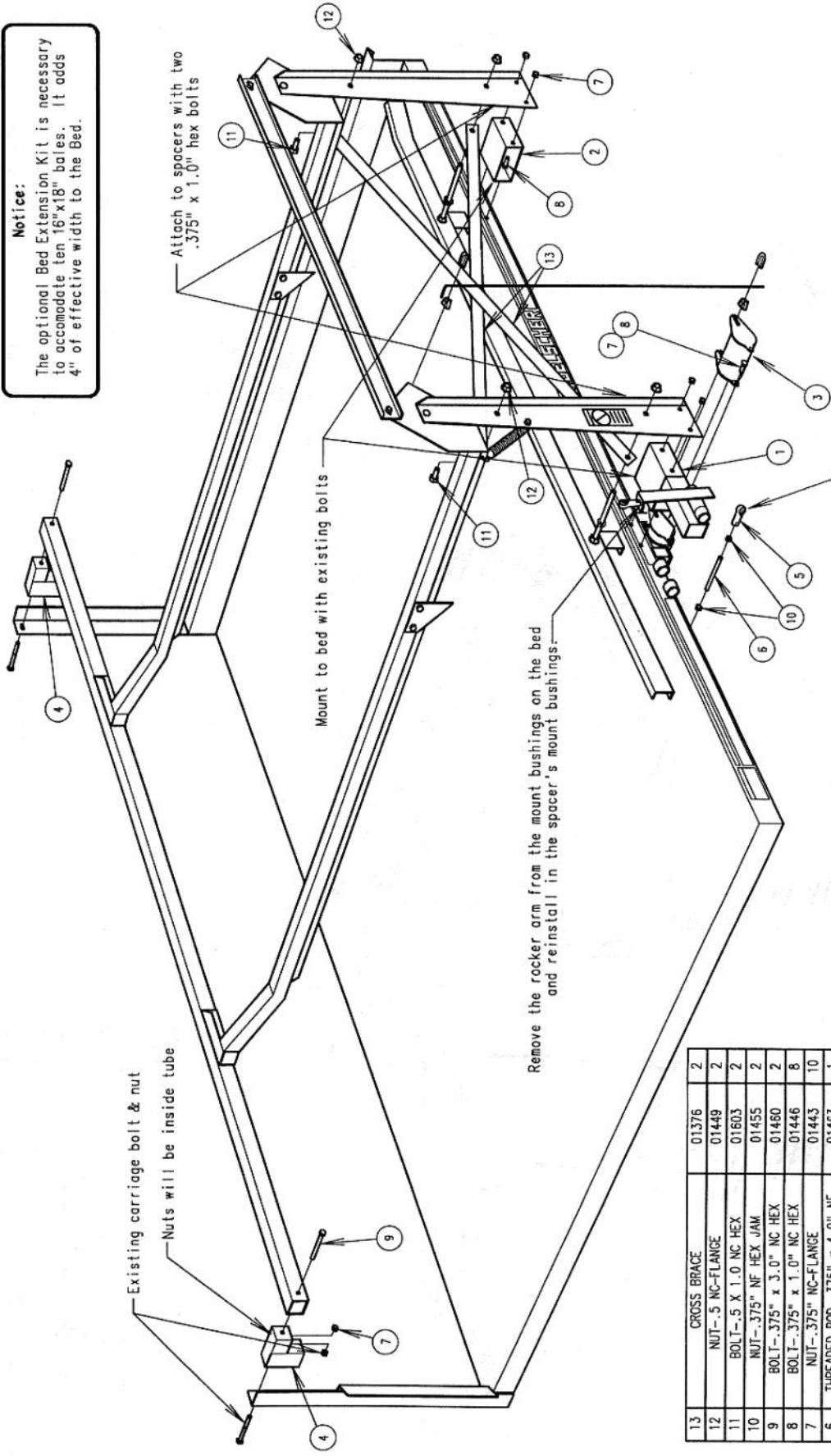
Note:
These Safety Signs and other decals are attached to this equipment for **your safety** and to prevent mechanical damage. Replace these decals if they become damaged or illegible.

HOELSCHER
SAFETY SIGNS & DECALS
1000 ACCUMULATOR
SERIAL NO.: 02624-CURRENT



HOELSCHER
1000 ACCUMULATOR
WAGON HITCH
 AVAILABLE: JANUO REV'D: JAN08
SA1000-18

NO	DESCRIPTION	PART NO	QTY
15	HITCH BRACE	02176	1
14	COTTER PIN-.25 X 2.0	01570	2
13	NUT-.375 NC FLANGE LOCK	01443	3
12	BOLT-.375 X 1.00 NC CARRIAGE	01448	3
11	NUT-.5 NC FLANGE	01449	11
10	BOLT-.50 X 5.0 NC HEX	01958	2
9	BOLT-.50 X 1.50 NC HEX	01450	9
8	PIN-.75 X 3.50	01080	1
7	BACK-UP PLATE	01957	1
6	MOUNT BRACKET	01935	1
5	BALL END	01934	2
4	DRAWBAR-3.0"	01933	1
3	DRAWBAR-3.5"	01932	1
2	CLEVIS WELDMENT	01931	1
1	PLATE	01930	1



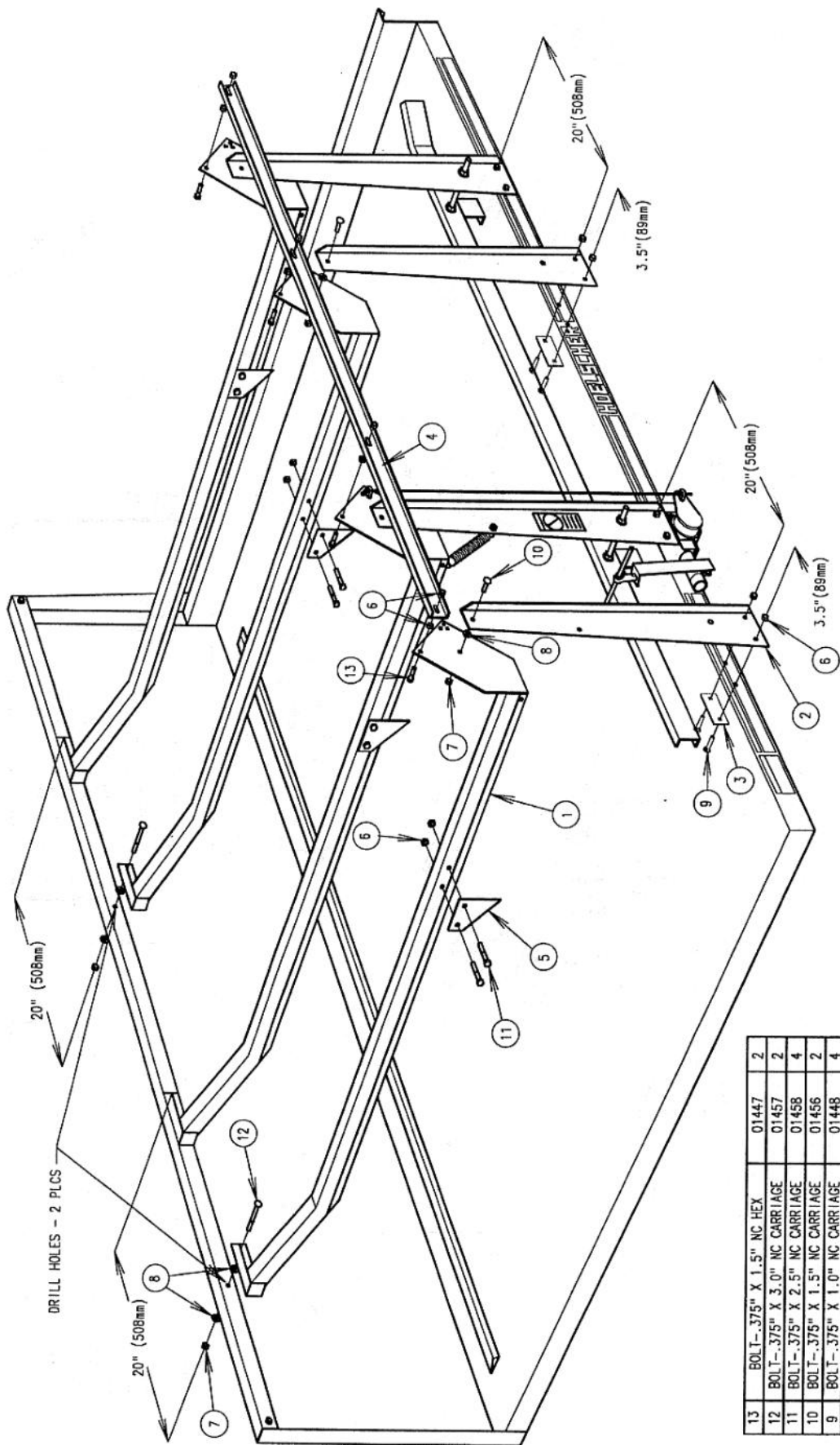
Notice:
 The optional Bed Extension Kit is necessary to accommodate ten 16"x18" bales. It adds 4" of effective width to the Bed.

Remove the rocker arm from the mount bushings on the bed and reinstall in the spacer's mount bushings.

Replace the male rod end in the valve control rod with the all-thread stud & female rod end, use jam nuts to lock both ends of the stud.

NO	DESCRIPTION	PART NO	QTY
13	CROSS BRACE	01376	2
12	NUT-.5 NC-FLANGE	01449	2
11	BOLT-.5 X 1.0 NC HEX	01603	2
10	NUT-.375" NF HEX JAM	01455	2
9	BOLT-.375" x 3.0" NC HEX	01460	2
8	BOLT-.375" x 1.0" NC HEX	01446	8
7	NUT-.375" NC-FLANGE	01443	10
6	THREADED ROD-.375" x 4.0" NF	01463	1
5	ROD END-.375" FEMALE	01294	1
4	MOUNT TUBE SPACER	01177	2
3	CABLE MOUNT EXTENSION	01292	1
2	UPRIGHT SPACER	01375	1
1	UPRIGHT SPACER W/ PIVOT	01176	1

HOELSCHER
 1000 ACCUMULATOR
 BED EXTENSION KIT
 AVAILABLE: APR 92

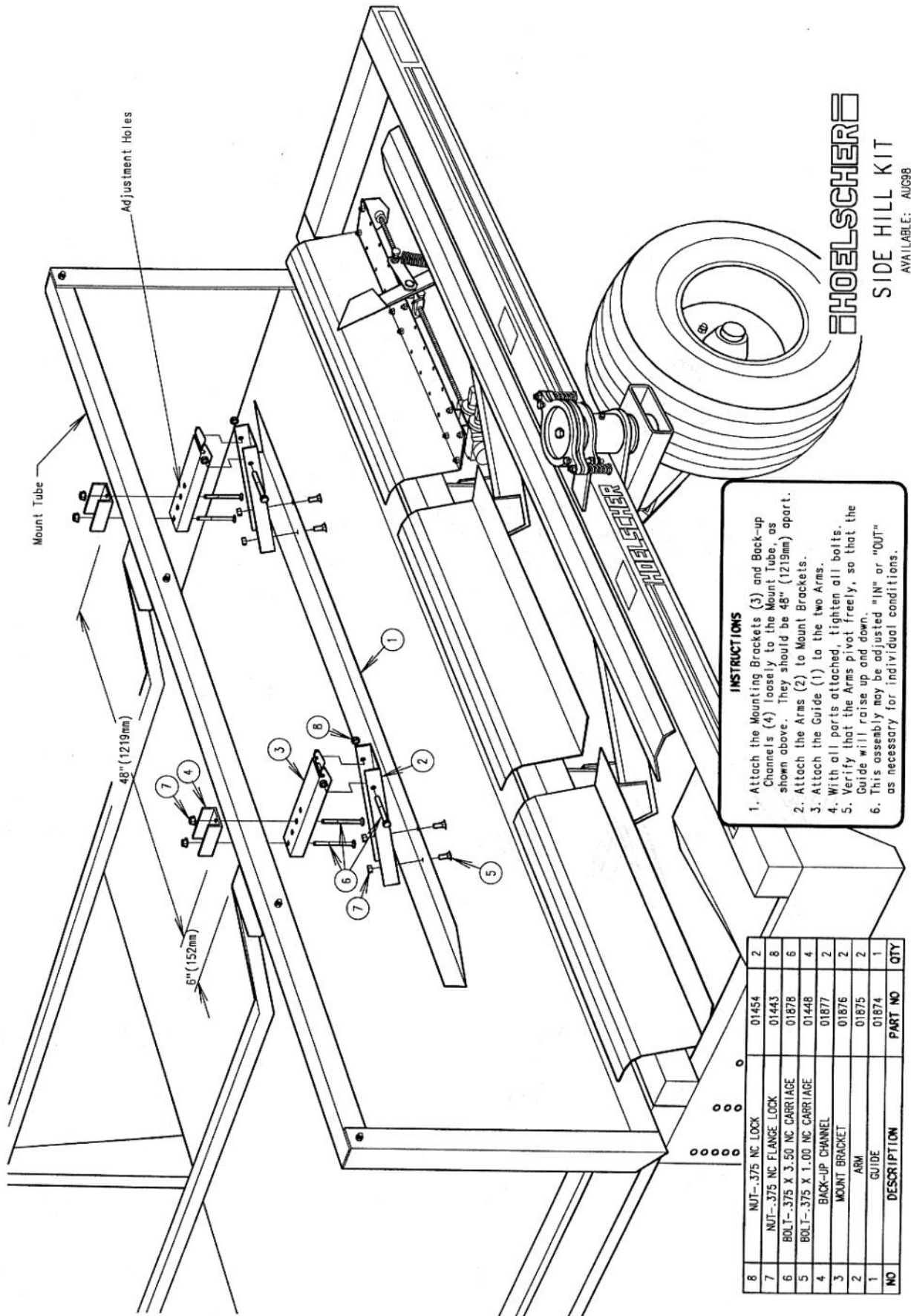


HOELSCHER
 1000 ACCUMULATOR
 HOLD-DOWN KIT
 AVAILABLE: DEC 91

Notice

1. The installation of this kit requires drilling two 0.438" (11mm) diameter holes, at the locations shown.
2. The Connecting Bar (P/N 01332), replaces the original Connecting Bar (P/N 01064).

NO	DESCRIPTION	PART NO	QTY
13	BOLT-.375" X 1.5" NC HEX	01447	2
12	BOLT-.375" X 3.0" NC CARRIAGE	01457	2
11	BOLT-.375" X 2.5" NC CARRIAGE	01458	4
10	BOLT-.375" X 1.5" NC CARRIAGE	01456	2
9	BOLT-.375" X 1.0" NC CARRIAGE	01448	4
8	WASHER-.375"-FLAT	01444	6
7	NUT-.375" NC-LOCK	01454	4
6	NUT-.375" NC-FLANGE	01443	12
5	DOG	01063	2
4	CONNECTING BAR	01332	1
3	BACK-UP PLATE	01295	2
2	UPRIGHT	01381	2
1	HOLD-DOWN BAR	01281	2



HOELSCHER

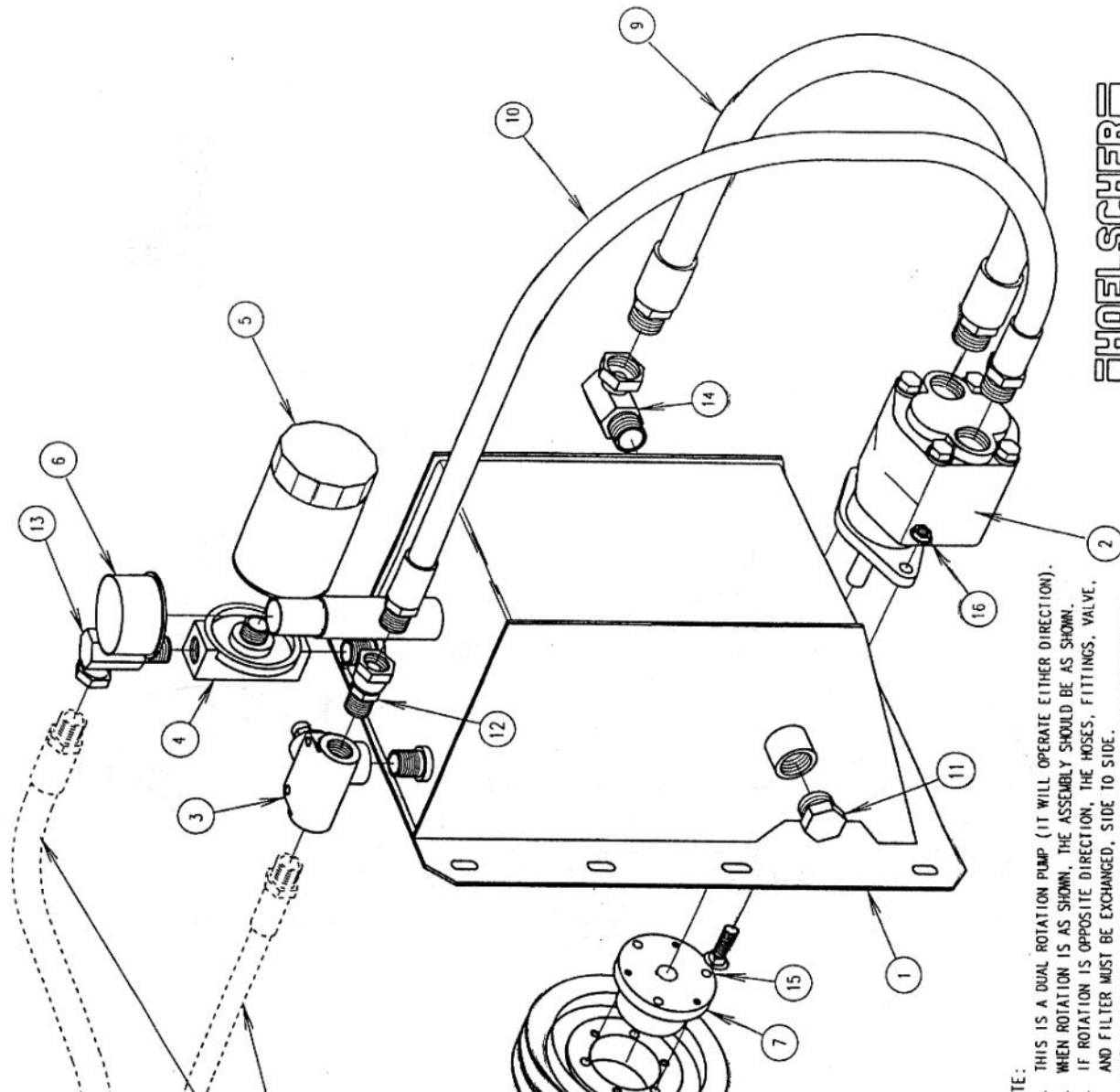
SIDE HILL KIT

AVAILABLE: AUG98

INSTRUCTIONS

1. Attach the Mounting Brackets (3) and Back-up Channels (4) loosely to the Mount Tube, as shown above. They should be 48" (1219mm) apart.
2. Attach the Arms (2) to Mount Brackets.
3. Attach the Guide (1) to the two Arms.
4. With all parts attached, tighten all bolts.
5. Verify that the Arms pivot freely, so that the Guide will raise up and down.
6. This assembly may be adjusted "IN" or "OUT" as necessary for individual conditions.

NO	DESCRIPTION	PART NO	QTY
8	NUT--.375 NC LOCK	01454	2
7	NUT--.375 NC FLANGE LOCK	01443	8
6	BOLT--.375 X 3.50 NC CARRIAGE	01878	6
5	BOLT--.375 X 1.00 NC CARRIAGE	01448	4
4	BACK-UP CHANNEL	01877	2
3	MOUNT BRACKET	01876	2
2	ARM	01875	2
1	GUIDE	01874	1



HOELSCHER
 HYD POWER PACK ASS'Y

AVAILABLE: JAN 97

- NOTE:
1. THIS IS A DUAL ROTATION PUMP (IT WILL OPERATE EITHER DIRECTION).
 2. WHEN ROTATION IS AS SHOWN, THE ASSEMBLY SHOULD BE AS SHOWN.
 3. IF ROTATION IS OPPOSITE DIRECTION, THE HOSES, FITTINGS, VALVE, AND FILTER MUST BE EXCHANGED, SIDE TO SIDE.
 4. WHEN DRIVEN BY A 2" DIAMETER FLYWHEEL, THE PUMP WILL DELIVER 18.5 GPM (70 LITRE/MIN).
 5. SET RELIEF VALVE TO 2000 PSI (138 BAR).

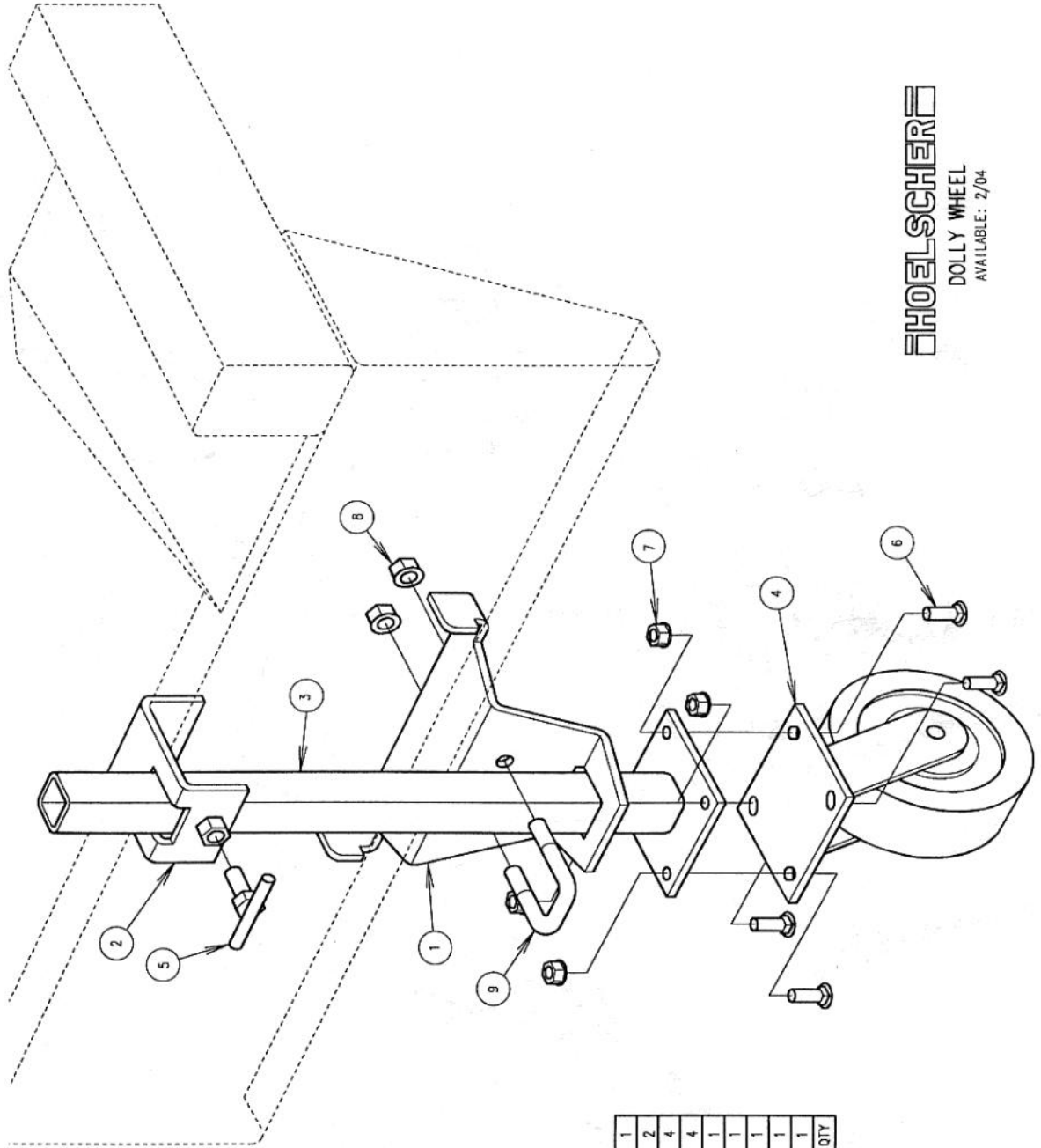
THESE HOSES ARE NOT INCLUDED IN ASSEMBLY

.75" RETURN HOSE FROM ACCUMULATOR

.5" PRESSURE HOSE TO ACCUMULATOR

STANDARD DIRECTION OF ROTATION

NO	DESCRIPTION	PART NO	QTY
16	NUT-.375" NC FLANGE	01443	2
15	BOX-1-.375" x 1.0" NC CARRIAGE	01448	2
14	FITTING-1.0"NPT M-F 90 SWIVEL	01717	1
13	FITTING-.75" NPT M-F 90 SWIVEL	01543	2
12	FITTING-.75 NPT M-F SWIVEL	01542	1
11	FITTING-1.0" NPT HEX PLUG	01716	1
10	HYD HOSE-.75" x .30"	01389	1
9	HYD HOSE-1.0" x .20"	01715	1
8	SHEAVE-9.75"Ø	01676	1
	SHEAVE-7.75"Ø	01675	1
7	HUB W/ 3-.312" X 2.0" HEX BOLTS	01677	1
6	BREATHER CAP	01387	1
5	FILTER ELEMENT	01386	1
4	FILTER BASE	01385	1
3	RELIEF VALVE	01384	1
2	PUMP	01718	1
1	RESERVOIR	01152	1
	DESCRIPTION	PART NO	QTY



9	U-BOLT-.50 X 1.50-SQUARE	01244	1
8	NUT-.500 NC-FLANGE	01449	2
7	NUT-.375 NC-FLANGE	01443	4
6	BOLT-.375 X 1.00 NC-CARRIAGE	01448	4
5	HAND SCREW	02143	1
4	CASTER-6"X2"	02142	1
3	STEM	02141	1
2	CLIP	02140	1
1	MOUNT BRACKET	02139	1
NO	DESCRIPTION	PART NO	QTY

HOELSCHER
 DOLLY WHEEL
 AVAILABLE: 2/04

Notes:

Trouble-shooting

Symptom

Bale catches on front corner of bed as the push-over arm is pushing the bales onto the bed.

Cause

1. Bale length is too long.
2. Arm Control Lever is too far forward

Remedy

1. Shorten bale length.
2. Move Arm Control Lever rearward.

Bale wedges under push-over arm, as the arm is returning down

1. Bale length is too short.
2. Arm Control Lever is too far back.
3. Baling faster than the capacity of the hydraulic system.
4. Insufficient hydraulic volume.

1. Lengthen bale length.

2. Move Arm Control Lever forward.
3. Slow travel speed.
4. Increase hydraulic flow from pump.

Bales are bent as they slide onto the accumulator.

1. Too much angle between the baler and accumulator.

1. Level the baler in relation to the accumulator.

Bale contacts the Arm Control Lever, but the Push-over Arm does not move.

1. Hydraulic system is not operating.
2. Control linkage is malfunctioning.

1. Engage the hydraulic system.
2. Check linkage for damage or binding.

Push-over Arm raises part way, then returns down or, continues up slowly.

1. The Detent is not holding the Arm Control Lever back positively for the full stroke of the Push-over Arm.

1. Adjust as shown on page 13.

Push-over Arm raises part way, then returns back down, and then raise again. It may seem to be activated twice.

1. A bale sliding back may briefly contact the Arm Control Lever prematurely. As the Push-over Arm starts up, the bale slides forward, releasing the Control Lever. When the baler makes its next stroke, the bale again activates the Arm Control Lever.

1. Verify that the four bolts holding the Arm Valve are installed with the head on bottom. See page 17.
2. Place a longer bolt (approximately 2" (50mm) in one of the holes 4"-6" (100-150mm) ahead of the Arm Control Lever.

Push-over Arm does not return down.

1. The Detent is not releasing the Arm Control Lever.
2. The Arm Valve or linkage is sticking.
3. The Safety Valve is sticking.

1. Adjust as shown on page 13.
2. Clean or adjust valve and linkage as necessary.
3. Clean and adjust as shown on page 16.

Bales do not set properly on Bed.

1. Push-over Arm does not push the bales far enough.
2. Push-over Arm moves too fast, and throws the bales.

1. Detent is not holding Arm Control Lever sufficiently.
2. Reduce hydraulic flow to the accumulator.

Bales do not pivot properly while being pushed to the Bed. They may hit the Mount Tube on top of the Bed.

1. Bales are not close enough to the vertical part of the Bale Chute of the accumulator.
2. Push-over Arm moves too fast, and throws the bales.

1. Move the entire accumulator to the left as far as possible, in relation to the baler.
2. Reduce hydraulic flow to the accumulator.

Bales slide on the Bed and contact the Bed Control Bar before the Bed is fully loaded.

1. Working on excessive incline.
2. Push-over Arm is operating too fast.

1. Travel in other direction if possible.
2. Reverse the Dogs on the Hold-down Bars, so that the bales contact the vertical side, instead of the tapered side.
3. Reduce hydraulic flow to the accumulator.

Bales fall back onto the Push-over Arm, after being placed on the Bed.

1. The Push-over Arm did not operate through it's full cycle, and the bales were not completely on the Bed.
2. Working on excessive incline.

1. Check adjustment of the Arm Control Lever and Detent. See page 13.
2. Travel in other direction, if possible.

Bales fall off of left side of Bed, when the Bed is dumping.

1. The bales were not completely on the Bed.
2. Working on excessive incline.

1. Verify that the Push-over Arm is making it's full cycle. Adjust Detent as necessary.
2. Travel in other direction if possible.
3. Install optional Side-hill Kit. See page 27.

The Bed raises too slowly, allowing the bales to separate as they slide off.

1. Bed Control Bar is not fully depressed.
2. Insufficient hydraulic flow to the Bed cylinder.

1. Verify that the Push-over Arm is making it's full cycle. Adjust Detent as necessary.
2. Check the Restrictor on the Bed Valve for debris that may be blocking flow.

Bed will not raise.

1. Hydraulic system is not operating.
2. Bales have not contacted Bed Control Bar.
3. Safety Valve is not being depressed by the Valve Actuator.

1. Verify that the hydraulic system is energized.
2. Verify that the Push-over Arm is making it's full cycle. Adjust Detent as necessary.
3. Adjust Side-Rail as necessary. See page 14.
4. Check operation of Safety Valve. See page 16.

Bed raises but will not return down.

1. Bed Control Bar or Bed Valve are sticking.
2. Restriction in the return hose to the tractor. (On Open-center systems, the Bed is not powered down.) Restrictions are most likely caused by a quick-coupler, or damaged hose.

1. Clean and lubricate the Bed Control Bar and linkage to the Bed Valve.
2. Replace quick-coupler on return hose and check for damaged hoses between the Bed valve and the tractor.

HOELSCHER

HOELSCHER, INC - 312 S Main St - Bushton, KS 67427
620-562-3575

www.hoelscherinc.com